

IDAHO SPRINGS SPORTS & EVENTS COMPLEX MASTER PLAN



6.29.2023

TABLE OF CONTENTS

1. INTRODUCTION	5
1.1 Executive Summary	
2. EXISTING CONDITIONS	6
2.1 Project Goals	
3. PLANNING PROCESS	10
3.1 Importance of Public Engagement	
3.2 Public Input Process & Public Meetings	
3.3 Summary of Public Comments	
4. RECOMMENDATIONS	14
4.1 Reconfiguration of Site and New Amenities	
4.2 Utility Extensions	
4.3 USFS Property Access Relocation	
5. IMPLEMENTATION	24
5.1 Phasing	
5.2 Rough Cost Estimate	
6. GRANTS AND FUNDING	24
6.1 Grant Agencies and Programs	
6.2 Leveraging Grants	
7. APPENDIX	28-68
7.1 CCMRD - Community Engagement Report	
7.2 CCMRD - Addendum 1	
7.3 CCMRD - Addendum 2	
7.4 CCMRD - Addendum 3	
7.5 Clear Creek Courant - Pickleball Article	

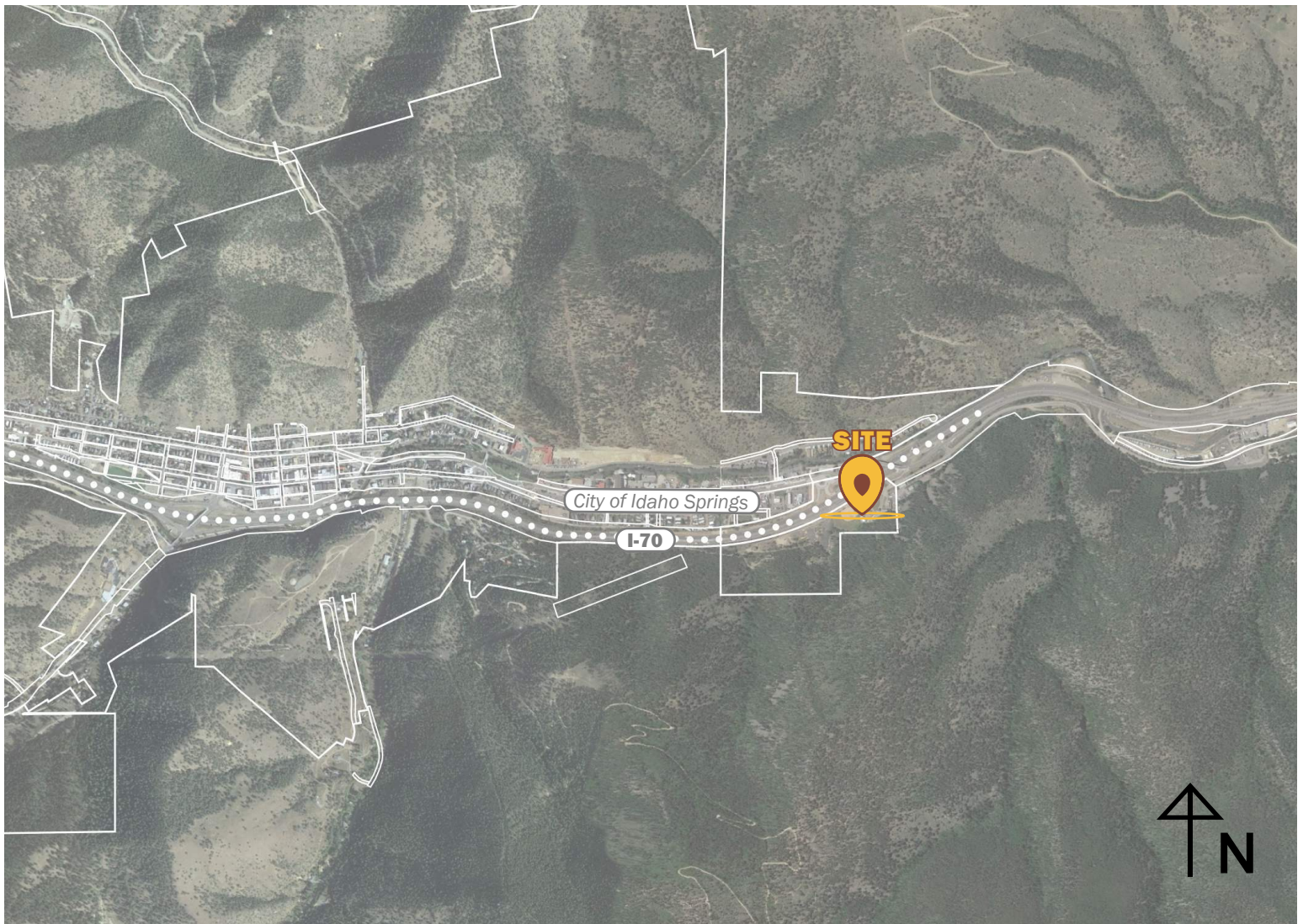


INTRODUCTION

Executive Summary

THK Associates, Inc. is pleased to provide the City of Idaho Springs and the Clear Creek Metro Recreation District (CCMRD) with a master plan for the Idaho Springs Sports & Events Complex, located in eastern Idaho Springs. THK was contracted by the City of Idaho Springs in August of 2022 to facilitate the development of a master plan and preliminary construction cost estimate, in addition to engaging with City Council and the general public on design concepts and plan recommendations. The master plan incorporates the longtime community desire to offer a wider range of recreational opportunities and serve as an outdoor community hub that will further inspire a collective appreciation for outdoor recreation, community connectedness, and an improved quality of life for residents of Idaho Springs.

The goal of the master plan is to compile feedback obtained from the general public and interest groups throughout the engagement process into recommendations to enhance the existing community asset that is the Sports & Events Complex. Because of the limited amount of space available for improvements, and due to the wide range of recreational activities various stakeholders hoped to incorporate, a heavy emphasis was placed on multi-use spaces. Many of the proposed programmatic elements have the ability to easily accommodate alternative activities, i.e. pickleball and tennis courts, soccer and baseball fields, etc. Upon development of a preferred design concept, a cost estimate was prepared to better assist the City in future funding via grant applications and phasing of implementation.



EXISTING CONDITIONS

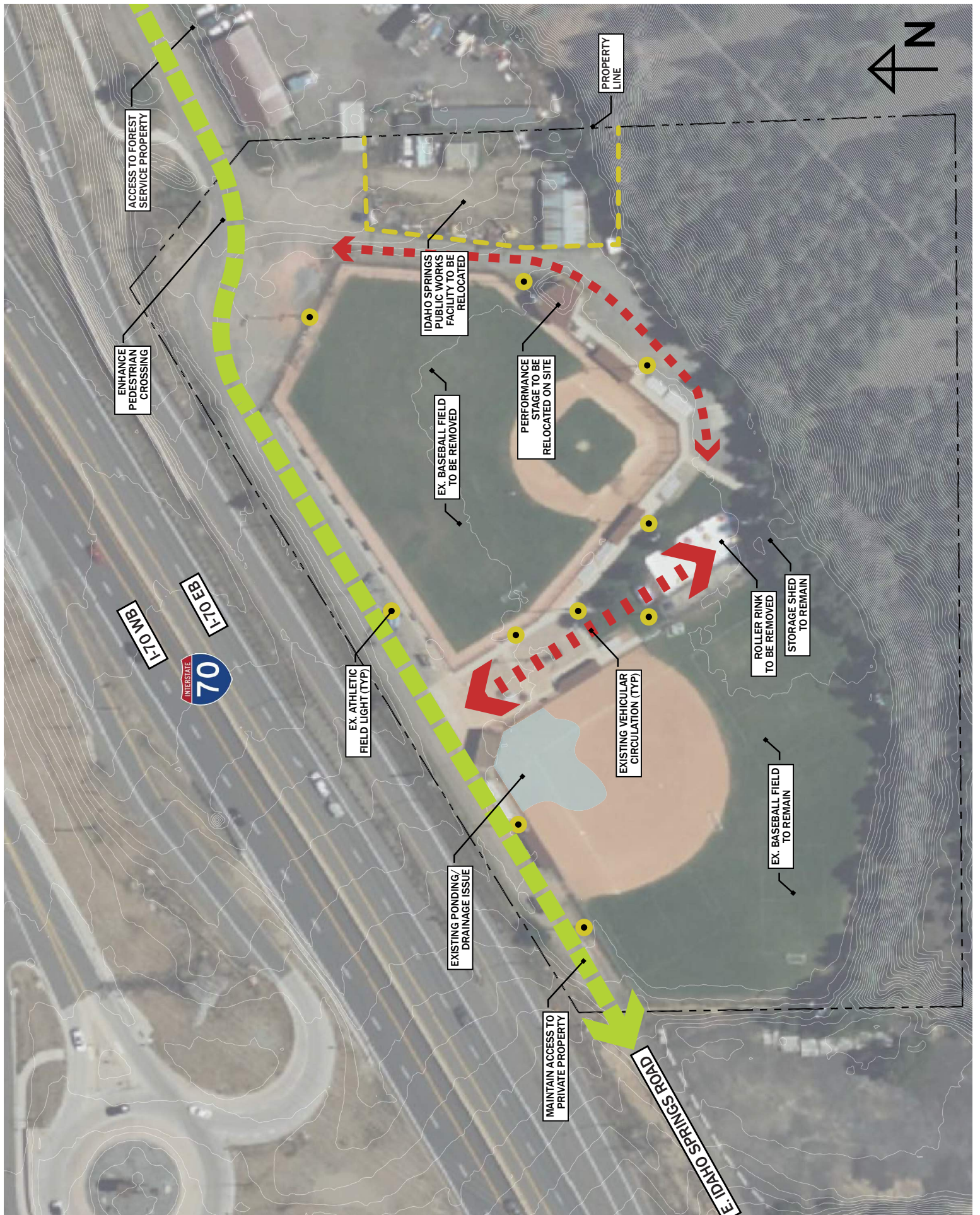
The Idaho Springs Sports & Events Complex is located on the eastern end of the City of Idaho Springs, Colorado, and is host to many cultural and community events for the region. The property is approximately 7 acres, and is confined by I-70 to the north, US Forest Service property to the south and east, and private property to the west. The Scott Lancaster Memorial Bike Path and Trail runs adjacent to the north property line and continues west for approximately 0.35 miles before reaching a pedestrian bridge tunnel under I-70, connecting to Idaho Spring’s eastern residential and commercial districts. This path is an important connection for visitors to the Sports & Events Complex. The trail continues further east down East Idaho Springs Road (CR314), where it ultimately links with the Clear Creek Greenway Trail.

Most of the site is primarily flat and has been suitably graded for parking, athletic activity, and large gatherings. On the south end of the site, the existing grade rapidly increases into a steep mountain slope, totaling approximately 29% of the site. Existing facilities are placed in close proximity to the toe of the slope to maximize the potential use of the site. This portion of the site is not suitable for future development but may offer recreational opportunity in the form of hiking.

The existing Sports and Events Complex is home to two baseball/softball fields (with associated dugouts, bleachers, and press box), batting cages, roller-skating rink, and events stage. A maintenance shed and a public works storage facility also occupy the site and are scheduled for relocation elsewhere in Idaho Springs in 2023. Shelly Field (the eastern ball field) has limited use as a baseball field due to its size and orientation. Currently, games are limited to players 8 and younger due to the potential for baseballs to be hit onto I-70, creating a safety risk. Quinn Field (the western ball field) is larger in size and has a more suitable orientation compared to Shelly Field, while also offering a press-box and storage facility behind home plate. Both fields are currently irrigated. Unlike Shelly Field, Quinn field does not have a turf infield, resulting in ponding and drainage issues near home plate after rainfall or snow-melt. Six high-mast athletic field lights are present along the perimeter fencing of each field, for a total of twelve.

There are currently 22 “official” parking spaces on site. Informal spaces appear during peak times, such as at the annual Rapidgrass Bluegrass Festival or soccer game days. Visitors to the Sports & Events Complex park their vehicles primarily along the



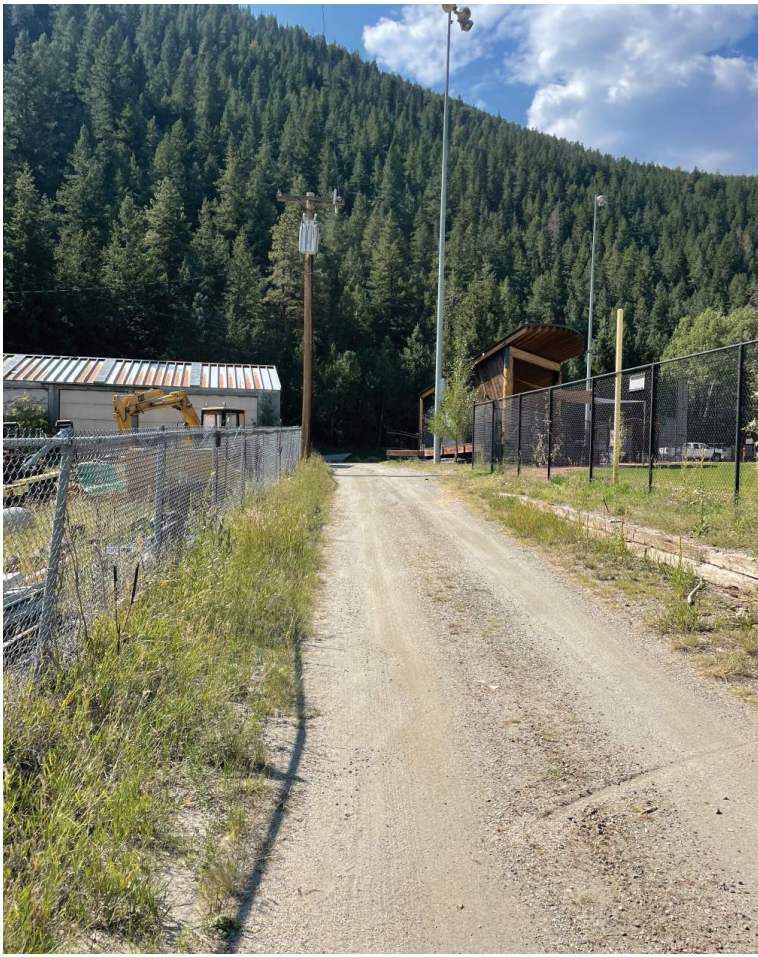


perimeter of Shelly Field, however, parking is in short supply during larger community events. Vehicular access is provided around Shelly Field to the existing maintenance shed and public works facility, as well as to the US Forest Service property east of the Sports & Events Complex and to the private property west of the Sports & Events Complex. Vehicular access to the adjacent properties must be maintained in any future renovations to the Complex.

The site currently has a 2" water line running underneath Quinn Field's infield and to the landscape buffer bisecting Quinn and Shelly Fields, providing water for the irrigation system on site. The site is also serviced by electrical infrastructure, providing power to the high-mast athletic field lights, events stage, and storage facilities, but conduit locations and additional electrical infrastructure information is unknown. Additional investigation and survey will be needed to better understand the existing configuration. No sanitary or sewer lines are servicing the site. Portable toilets are provided on the southern end of the Complex and are routinely serviced and/or swapped out.

Redeveloping the Idaho Springs Sports & Events Complex into a new park with more public space will enhance the vitality of the community by providing much needed recreational space, without barrier to entry. The Complex's proximity to the Greenway Trail provides a critical link to the population hubs of Idaho Springs, and thus will allow more residents and visitors to access and enjoy this space.





PLANNING PROCESS

Coordination with Major Stakeholders

Open communication between the project team and Idaho Springs and CCMRD staff was vital to the success of this project. In addition to regularly scheduled meetings with Idaho Springs and CCMRD staff, the project team identified and met with several key stakeholders with vested interest in the future of the Sports & Events Complex.

The Idaho Springs Skate Board officially formed in September of 2021, and is a community committee of high school students, community members, and local professionals with a shared vision of bringing a skatepark to the City of Idaho Springs. After dismantling the skate ramps and features at the terminus of Riverside Drive that had once been available to the Idaho Springs community the Skate Board has since been actively pursuing a suitable location for a permanent skatepark in Idaho Springs.

In November of 2022, the project team met with the Skate Board for a roundtable discussion and review of the project team's progress to date. This meeting was held at Tommyknocker Brewery & Pub in downtown Idaho Springs, with an attendance of approximately 25 board members and interested parties. A preliminary reconfiguration concept of the Sports & Events Complex was presented for initial feedback. Precedent imagery of successful skateparks elsewhere in Colorado, as

well as skatepark features and elements were also presented to drive conversation and encourage collaboration amongst the group. Precedent imagery of restroom and concession facilities, play equipment, and regional-specific features, such as bouldering play structures, were also presented.

In December of 2022, the project team continued to engage with stakeholders and sought to obtain feedback from the Idaho Springs Planning Commission. Prior to the meeting, a public open house was held at the Idaho Springs City Hall, where members of the public reviewed the preferred Sports & Events Complex reconfiguration, and engaged with team members by asking questions and offering opinions on how they'd like to see the space reimaged.

During the winter and spring of 2023 the Clear Creek Metropolitan Recreation District (CCMRD) conducted ongoing public engagement efforts with numerous user-groups. Additionally, outreach to Idaho Springs' and Clear Creek County's athletic groups (pickleball, tennis, basketball, etc.) were conducted. In the Appendix is the Community Engagement Report prepared by CCMRD summarizing their findings from the additional public engagement effort.



KEY THEMES HEARD AT NOVEMBER 21, 2022 SKATE BOARD MEETING

Overall Park Comments & Considerations

- Concessions and restroom structure should have a covered element.
- Pedestrian-scale lighting is preferred over the current high-mast athletic field lights.
- A desire to study the demand for the number of parking spaces was expressed. Suggestions were made to maximize the flexibility of the parking lot.
- Better connect the Greenway Trail and pedestrian tunnel into Idaho Springs.
- Presence of a historic railroad on the south slope of the park was raised, with a desire to somehow incorporate access to the railroad into the scope of the park.
- Will the pickleball and tennis courts be used enough to justify the amount of space they occupy?

Future Skatepark Preferences

- Consider incorporating covered elements into skatepark.
- Strong desire to incorporate bowls/pool features into future skatepark was expressed.
- Strong desire to incorporate stairs and quarter-pipe elements into future skatepark design was also expressed.
- Quality of concrete and coping is extremely important. Preference is to work with a skatepark designer that has experience in Idaho Spring's climate (or similar).
- Paving the pumptrack (as opposed to natural surfacing) is generally preferred. Extra consideration should be given to where the curves of the pumptrack are located.
- Refer to "Olympic-style" skateparks for inspiration on skate features.

Future Skatepark Considerations

- Concern over if the skatepark and pumptrack should be in the same space was raised. Primarily, the pumptrack would eat into the ~15,000 SF allocated to the skatepark.
- Too "robotic" and "stiff" of a skatepark would diminish the quality of the park. Work with a designer that has experience creating organic forms and is open to incorporating unusual elements, art installations, etc.





Arvada Skatepark
Arvada, CO (~40,000 SF)



Arvada Skatepark
Arvada, CO (~40,000 SF)



Arvada Skatepark
Arvada, CO (~40,000 SF)



Ulysses Skate Park
Golden, CO (~27,000 SF)



Ulysses Skate Park
Golden, CO (~27,000 SF)



Ulysses Skate Park
Golden, CO (~27,000 SF)



High Plains Park Pump Track
Denver, CO (~40,000 SF)



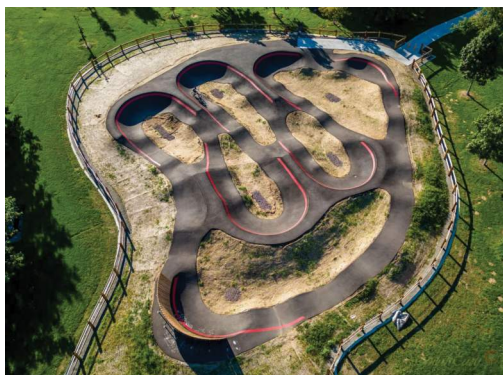
High Plains Park Pump Track
Denver, CO (~40,000 SF)



High Plains Park Pump Track
Denver, CO (~40,000 SF)



Montebello Pump Track
Denver, CO (~14,000 SF)



Montebello Pump Track
Denver, CO (~14,000 SF)



Montebello Pump Track
Denver, CO (~14,000 SF)



Medium Covered Restroom/Concession
(~600 SF)



Medium Covered Restroom/Concession
(~700 SF)



Medium Covered Restroom/Concession
(~815 SF)



Small Restroom/Concession
(~300 SF)



Small Restroom/Concession
(~320 SF)



Small Covered Restroom/Concession
(~360 SF)



Sensory Play Equipment



Sensory Chimes



Accessible Talk Tubes



Bouldering Amenity



Bouldering Amenity



Bouldering Activity Area

RECOMMENDATIONS

As a response to the feedback obtained in the public engagement phase and overall planning process throughout this Master Plan, a reconfiguration of the eastern ballfield (Shelly Field), the pedestrian mall bisecting the site, and existing storage and maintenance facility is recommended. The current configuration of the Sports & Events Complex does not lend itself to the varied mix of recreational activities that are in demand to Idaho Springs residents and stakeholders. Because of the limited green space suitable for recreation in Idaho Springs, it is recommended that any proposed improvements be as programmatically flexible as possible. This Complex is well-suited to accommodate new amenities and has been reimagined to better serve a more diverse range of community members.

A ~15,000 SF skatepark is proposed on the northern end of the site, where it will be most exposed to sunlight (maximizing snowmelt and evaporation), and adjacent to a mountainbike pump-track. These amenities have been in high-demand throughout Idaho Springs ever since the City had to demolish its previous skatepark due to the expansion of the Clear Creek Greenway trail. Parking improvements are proposed adjacent to the skatepark due to its proximity to E. Idaho Springs Road, the main vehicular access point to the Complex.

With the skatepark being located on the northern end of the site, the design team determined that since Shelly Field would no longer function as a ball-field, the events and performance stage needed to be relocated to an area that would still accommodate large crowds on a natural turf surface. Thus, it is recommended that this stage be relocated to orient out towards Quinn Field. With this in mind, the stage would most logically be situated along the central axis that divides Shelly and Quinn Fields. This will require infrastructure improvements to provide access to and from the stage. Widening of this central access, with a maintenance road from the parking lot, would complete a loop for service vehicles to circulate the site. By upgrading these drives, this would also have the added benefit of providing a designated space for food trucks to park during events and games.

The current configuration of the Sports & Events Complex does not have a concessions or restroom facility. It is recommended that, as part of this reconfiguration, a combined concessions and restroom facility be constructed on site. This will provide Idaho Springs with the opportunity of a new revenue source, while providing comfort and convenience to visitors of the Sports & Events Complex. The existing water line will need to be rerouted to this proposed joint facility.



A new sanitary line (or septic system) will need to be installed to accommodate the restrooms. This facility should be centrally located in relation to all proposed recreational elements.

With multi-use functionality in mind, the dimensions of a tennis court (currently lacking in Idaho Springs) would be able to fit four pickleball courts (a growing sport in Idaho Springs) in the same amount of space. Similarly, a basketball court to the south of the restroom and concessions facility would have the added benefit of being a paved surface for a wide-variety of recreational opportunities.

Idaho Springs has a significant number of young families, but offers few playgrounds and opportunities in close proximity. As part of this reconfiguration, an inclusive playground should be incorporated into the site. The playground should be buffered from the busy I-70 freeway and in close proximity to the restrooms. The most logical location for a playground is on the southern end of the site, where the events stage currently sits.

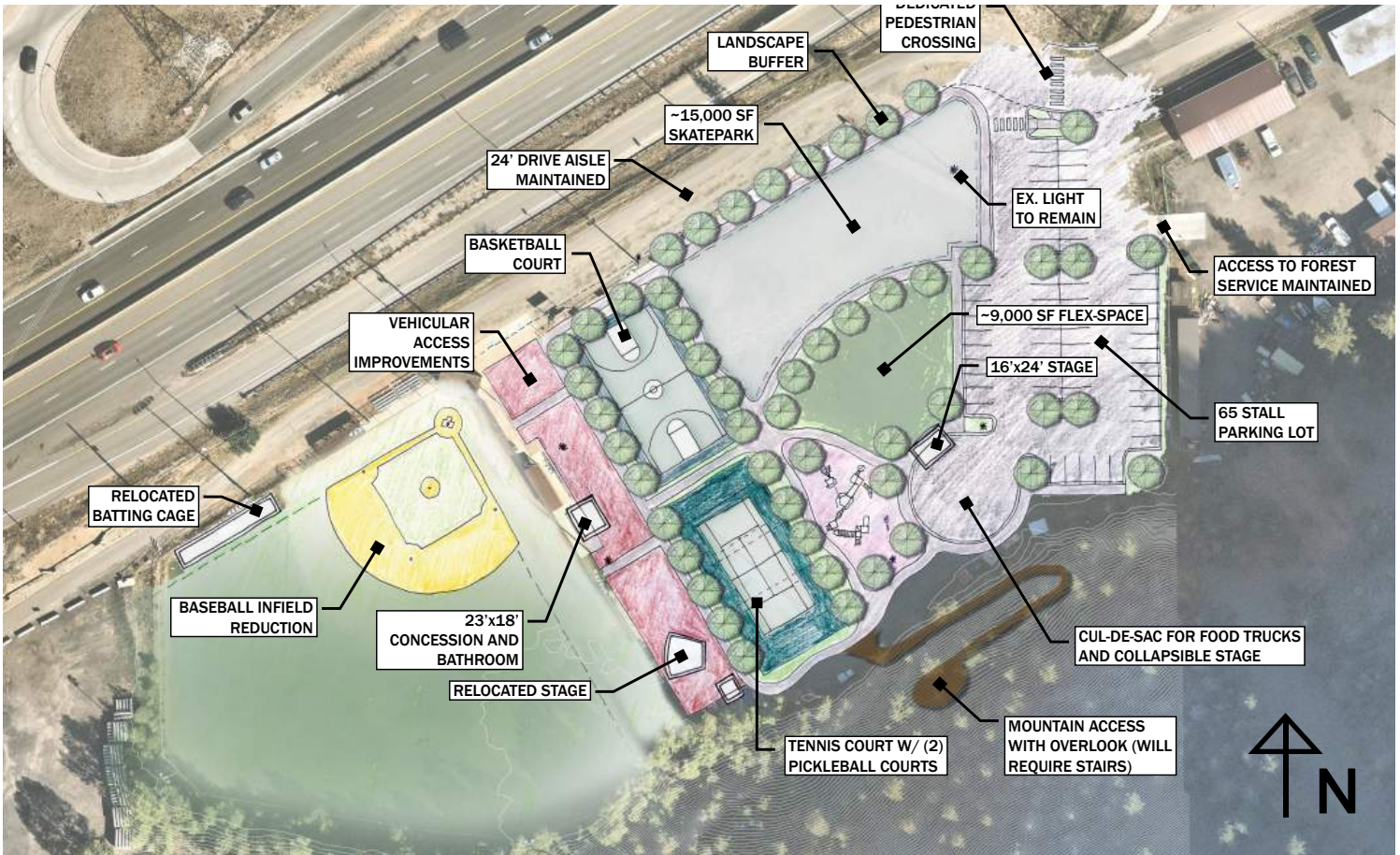
A flexible lawn should be placed as a divider between the skatepark and playground. Not only will this allow for a suitable spot for youth soccer games, it could also serve as a secondary space for larger events, and due to its proximity to the parking lot, would make for an appropriate spot to unload a collapsible stage. On pages 16 and 17 are the four preliminary alternatives studied that lead to the final master plan on pages 18 and 19.

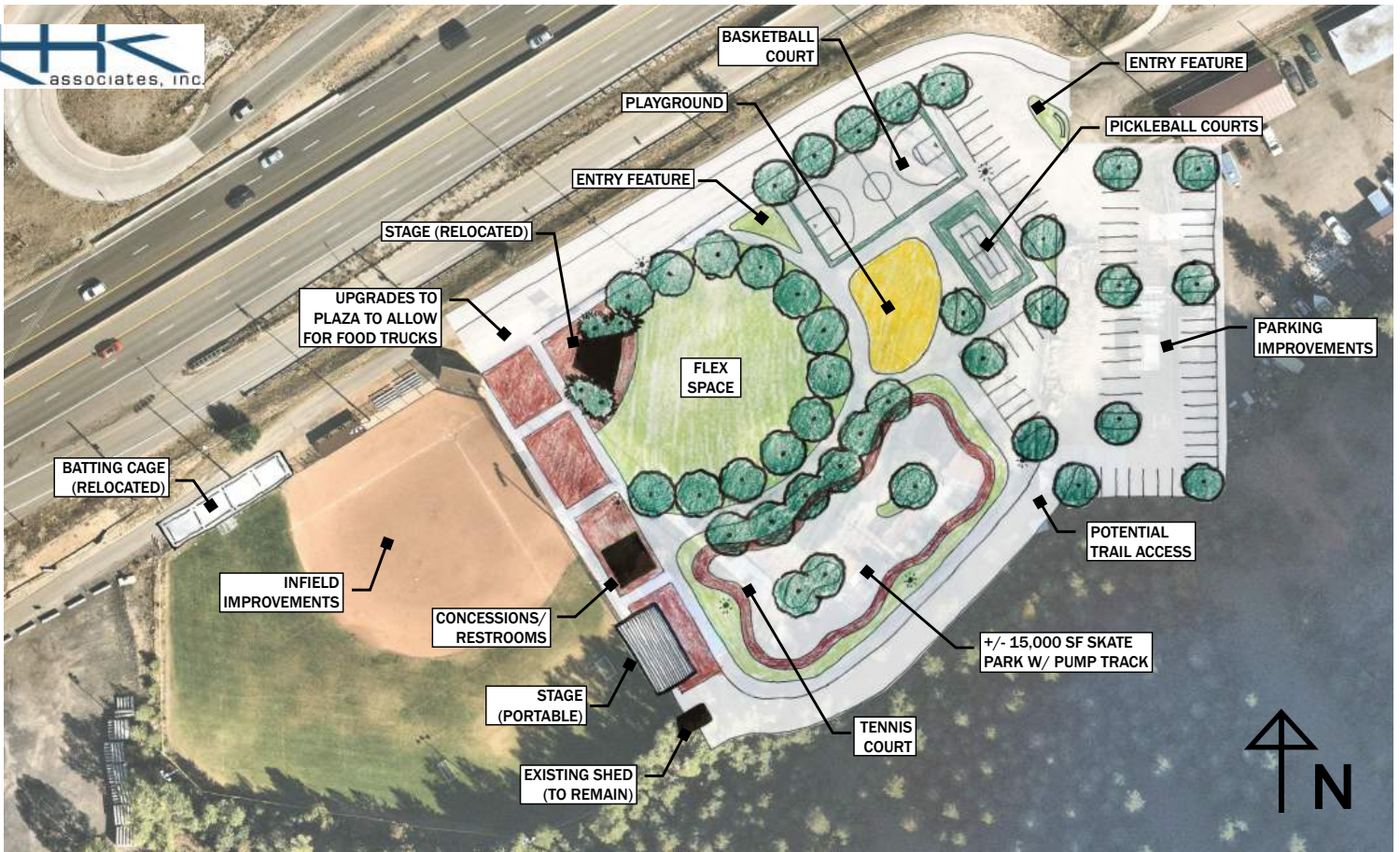
It became very clear that all desired uses could not be accommodated on the project site. So the final recommendation would be to conduct a shared use feasibility study of the Idaho Springs Area to determine the ability to find either, existing recreational facilities that could be shared or locations where additional new recreational facilities could be developed. The idea being, to provide additional recreational facilities that could not be accommodated at the Sports and Events Complex. Additional sports fields, a basketball court, mountain bike skills course, playgrounds for different ages and a pump track were all additional recreational facilities that stakeholders desired but could not be accommodated on the project site. The shared use study should look for opportunities to partner with others like the Clear Creek School District and private land owners to share recreational facilities.

Elements of the shared use study should include an inventory of all existing recreational facilities in the Idaho Springs area, identification of areas where additional facilities could be constructed and a market demand study to quantify the number of additional recreational features needed. Identifying willing potential partners to share facilities and developing shared use agreements should also be a part of the shared use study.



Preliminary Concept Alternatives









View of Parking and Skate Park Area



View from Quinn Field Looking East



Proposed Community Firepit East of Concession Building



Pedestrian Plaza with Access to Stage and Parking for Food Trucks



View of Community Park Ammenities



View of Flex Space and Stage



Playground with Stage and Quinn Field in the Background



View from Above Firepit Looking East



GRANTS AND FUNDING

While granting agencies and programs are an excellent source of funds to help implement projects, many require a significant “match.” The amount of funds required for matching grants varies greatly depending on the agency. For example, most GOCO grants require a 25% match for the requested funds, while some DOLA grants require a 100% match for requested funds. Matching funds can also take two forms:

Cash Match:

Cash matches are funds that are being spent from a specific account or project. For municipalities, these funds are usually provided from General Funds or Capital Improvements.

In-Kind Match:

In-Kind matches are services or materials that are being provided or donated. This can include labor, planning, building materials, maintenance or other services.

Each grant will have specific language that will help determine how to calculate the overall match and composition of the match.

The project identified in this Master Plan has significant cost for implementation. As municipalities and organizations related to Idaho Springs move forward with grant applications, providing matching funds for numerous grants can be a difficult and unrealistic process. A more efficient approach to seek funding for implementing projects as to leverage grants and projects against each other. Leveraging grants is utilizing a specific grant for a project as the required matching funds for a second grant for the project, and vice versa.

Leveraging can also be done with utilizing project costs from associated projects. For instance, if CDOT is planning infrastructure improvements in Idaho Springs, a grant application could potentially be submitted to GOCO for construction of recreational facilities that includes the CDOT infrastructure work. In this instance, the CDOT work could be utilized as necessary matching funds for the grant submittal, where applicable.

IMPLEMENTATION

Due to the cost and complexity of this project, a phased approach to construction of the preferred design concept will likely be needed. In November of 2022, Idaho Springs applied for a GOCO grant, and, based on recommendations from the project team, specified the following Sports & Events Complex projects be included in the first phase of construction:

- ~15,000 SF Skatepark
- Tennis/Pickleball Court
- Playground
- Parking Lot

Estimated costs for this Master Plan were created using 2022 construction costs. Construction costs in Colorado in 2022 remained volatile due to supply chain and labor shortage issues. When using this information in ensuing years, an inflation factor should be applied. The estimated costs are based on the elements presented in the Master Plan Recommendations chapter of this Master Plan. These estimated costs are intended to be used by managers and planners to project development costs of future recreational projects.

12% has been added to the estimated costs for design and engineering services. This percentage will vary depending on level of involvement and complexity of technical input. Typical projects range from 12%-15%. A 20% contingency is included.

Utility extensions associated with any potential project have been included in the estimated costs, but this element can vary widely in cost due to site specific conditions.

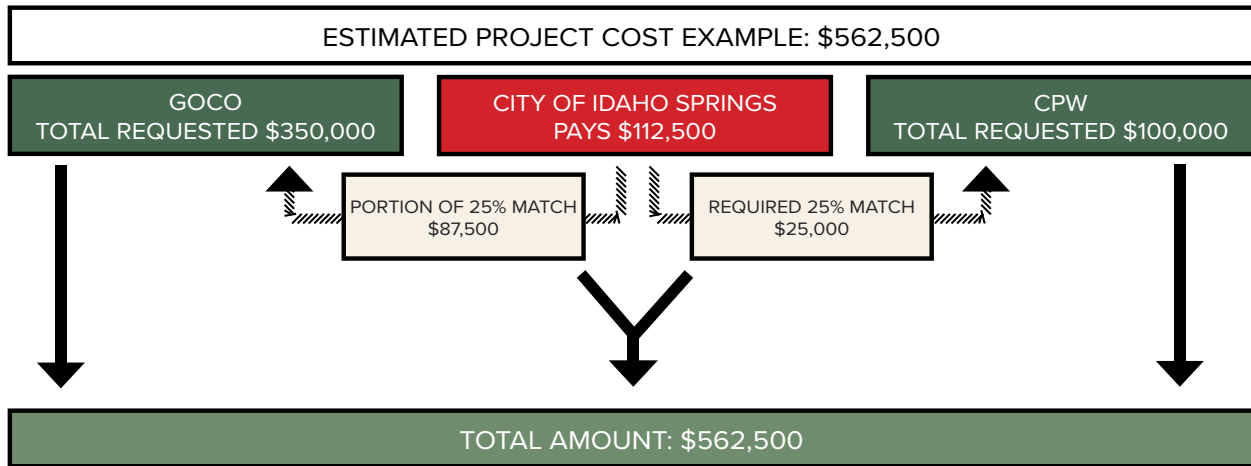


Figure 'A'

In this example, the City of Idaho Springs would have to provide a combined \$112,500 in matching funds for the grant applications. However, if the grants are leveraged against each other, the process looks more like Figure 'B':

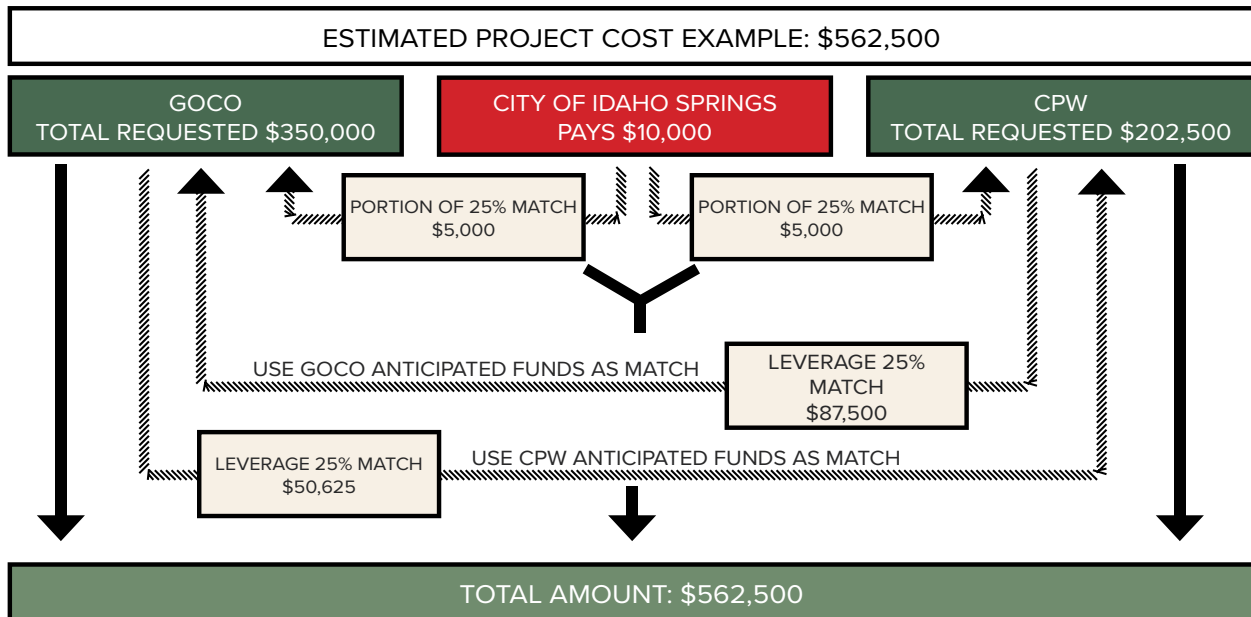


Figure 'B'

In this example, the City of Idaho Springs would only have to provide \$10,000 in matching funds as a project partner, saving the City \$102,500.

Idaho Springs Master Planning Recreation Complex

Opinion of Probable Cost

June 6, 2023

MOBILIZATION

Item	Qty.	Unit	Unit Cost	Total Item
General Conditions and Mobilization	1	LS	10% OF PROJECT COST	\$336,891.51
Mobilization Subtotal				\$336,891.51

DEMOLITION

Item	Qty.	Unit	Unit Cost	Total Item
Clearing and Grubbing	10,553	SF	\$0.50	\$5,276.50
Removal of Infield Mix (assuming 6" depth) *	1,033	CY	\$65.00	\$67,145.00
Removal of Stadium Light (Crane)	5	EA	\$4,500.00	\$22,500.00
Removal of Baseball Fence and Concrete Curb	852	LF	\$33.00	\$28,116.00
Removal of Maintenance Fence	316	LF	\$12.00	\$3,792.00
Removal of Maintenance Shed	1	LS	\$10,000.00	\$10,000.00
Tree Protection and Retention	403	LF	\$2.50	\$1,007.50
Removal of Tree	3	EA	\$1,000.00	\$3,000.00
Salvage Side Boards at Ice Rink	1	LS	\$1,500.00	\$1,500.00
Hand Digging in Tree Protection Zone	400	LF	\$9.00	\$3,600.00
Removal of Concessions Stand	1	LS	\$10,000.00	\$10,000.00
Salvage Scoreboard	1	LS	\$2,500.00	\$2,500.00
Removal of Garage	1	LS	\$4,000.00	\$4,000.00
Removal of Batting Cage	1	EA	\$1,500.00	\$1,500.00
Removal of Concrete Walks and Ice Rink	9,000	SF	\$2.00	\$18,000.00
Removal of Dugouts	2	EA	\$6,000.00	\$12,000.00
Removal of Irrigation System(Valves, heads, boxes, pipe to be left in place)	1	LS	\$7,500.00	\$7,500.00
Removal of Sod	36,250	SF	\$1.00	\$36,250.00
Erosion and Sediment Control (Silt Fence)	927	LF	\$2.50	\$2,317.50
Demolition Subtotal				\$240,004.50

EARTHWORK

Item	Qty.	Unit	Unit Cost	Total Item
Cut to Fill Onsite	1,000	CY	\$10.00	\$10,000.00
Fine Grading	100,000	SF	\$0.25	\$25,000.00
12" Subgrade Prep	23,101	SF	\$0.60	\$13,860.60
Demolition Subtotal				\$48,860.60

RELOCATION

Item	Qty.	Unit	Unit Cost	Total Item
Relocation of Stage	1	EA	\$75,000.00	\$75,000.00
Relocation of Bleachers	5	EA	\$2,000.00	\$10,000.00
Relocation Subtotal				\$85,000.00

*TO BE DISPOSED WITHIN 10 MILES OF THE SITE

FLATWORK

Concrete Pavement with Aggregate Base Course - 6" Natural Grey with

FLATWORK

Item	Qty.	Unit	Unit Cost	Total Item
Concrete Curb Ramp	3	EA	\$2,500.00	\$7,500.00
Curb and Gutter	1,350	LF	\$35.00	\$47,250.00
Concrete Pavement with Aggregate Base Course - 6" Natural Grey with light broom finish	23,101	SF	\$12.00	\$277,212.00
Asphalt (29173 SF)	3,240	SY	\$65.00	\$210,600.00
Parking Lot Striping	1,239	LF	\$6.00	\$7,434.00
Tennis Court Surface	7,200	SF	\$20.00	\$144,000.00
Crosswalk Paint	208	SF	\$45.00	\$9,360.00
Specialty Paving	15,743	SF	\$15.00	\$236,145.00
Crusher Fines Walkway @8" Depth	2,500	SF	\$3.00	\$7,500.00
Treated Lumber Trail Stairs	44	EA	\$180.00	\$7,920.00
Flatwork Subtotal				\$954,921.00

SITE IMPROVEMENTS

Item	Qty.	Unit	Unit Cost	Total Item
Shade Trees	49	EA	\$600.00	\$29,400.00
Retaining Wall	160	LF	\$500.00	\$80,000.00
Tennis Fence 12'	360	LF	\$125.00	\$45,000.00
Planter Beds (Cobble Mulch)	2,266	SF	\$5.50	\$12,463.00
Playground Equipment	1	LS	\$200,000.00	\$200,000.00
PIP Rubberized Surface	2,500	SF	\$35.00	\$87,500.00
Skate Park	18,319	SF	\$50.00	\$915,950.00
Site Furniture (Benches, Picnic Tables, Trash Receptacles)	1	LS	\$15,000.00	\$15,000.00
Bike Rack	1	LS	\$2,500.00	\$2,500.00
Sod	18,275	SF	\$1.00	\$18,275.00
Infield Mix (4" Depth)	200	CY	\$120.00	\$24,000.00
Fire Pit	1	EA	\$10,000.00	\$10,000.00
Collapsable Stage	1	EA	\$10,000.00	\$10,000.00
Entry Feature/Park Sign	1	LS	\$12,000.00	\$12,000.00
Concessions Building 30'x20' Cinderblock Construction	1	LS	\$500,000.00	\$500,000.00
Pedestrian Lighting	1	LS	\$50,000.00	\$50,000.00
Signage	1	LS	\$5,000.00	\$5,000.00
Soil Prep	1	LS	\$23,041.00	\$23,041.00
Site Improvements Subtotal				\$2,040,129.00

UTILITIES

Item	Qty.	Unit	Unit Cost	Total Item
Relocate 4" Water Line	850	LF	\$100.00	\$85,000.00
Storm Drainage	1	LS	\$10,000.00	\$10,000.00
Irrigation System	20,541	SF	\$2.50	\$51,352.50
Demolition Subtotal				\$146,352.50

Mobilization	\$336,891.51
Demo Subtotal	\$240,004.50
Earthwork	\$48,860.60
Relocation	\$85,000.00
Flatwork Subtotal	\$954,921.00
Site Improvements Subtotal	\$2,040,129.00
Subtotal	\$3,705,806.61

20% contingency	\$741,161.32
Construction Total	\$4,446,967.93

Design Fee(12%)	\$533,636.15
------------------------	---------------------

TOTAL	\$4,980,604.08
--------------	-----------------------

CCMRD - COMMUNITY ENGAGEMENT REPORT



IDAHO SPRINGS SPORTS COMPLEX MASTER PLAN REDESIGN COMMUNITY ENGAGEMENT REPORT

APRIL 2023



**COMMUNITY ENGAGEMENT REPORT
TABLE OF CONTENTS**

Community Engagement Report Introduction..... 1

Summary/Overview of Engagement Activities and Outcomes..... 2

The Idaho Springs Skatepark Project 2

Ballfield Redesign Feedback Survey..... 13

Idaho Springs Sports & Events Complex Master Plan Open House... 16

Playground Dreamworking Activity 17

Special Event Stakeholder Engagement Meeting 18

Youth & Adult Soccer 20

Pickleball (Adults & Youth) 21

Ad Hoc Feedback 22

Community Engagement Report Conclusion & Recommendations 23

Addendum #1: Skatepark Needs Survey Responses

Addendum #2: Skatepark SWOT Report

Addendum #3: Ballfield Redesign Feedback Survey Responses



Clear Creek Metropolitan Recreation District

Community Engagement Report Introduction

The City of Idaho Springs' 2017 Comprehensive Plan states the intention of promoting recreational opportunities, ensuring quality of life, and striving for an inclusive community. Recent City projects (the Colorado Blvd redevelopment project and the Greenway specifically), resulted in the demolition of some existing recreational amenities, including a tennis court and a small skatepark. Replacing these amenities has been a City and Clear Creek Metropolitan Recreation District (CCMRD) priority ever since. Suitable land for these amenities is limited in the rocky valley that is Idaho Springs.

The proposed master plan redesign of a portion of the Shelly-Quinn ballfield complex ("The Idaho Springs Sports & Events Complex") is an opportunity to elevate a well-loved space to become a hub of the community, while simultaneously delivering on the intent to replace the skatepark and tennis court (that doubles as pickleball courts). This project will have a long lasting impact on Idaho Springs, Clear Creek County, and the surrounding region at large.

The ballfields have been the setting for hundreds of community gatherings, sporting events, and outdoor recreation activities (both formal and informal) since the early 1980's.

There is deep connection and nostalgia with the space among local residents, and as such, any proposed changes must be well-aligned with community interests and desires. The proposed redesign is put forth in an effort to elevate a well-loved space to better serve the recreational interests of local residents, while simultaneously equipping the space for events and large crowds.

The redesigned area has the potential to become a space that appeals to young and old alike, that supports both organized sports and free play, that inspires recreation and time spent outdoors, and that enhances community vitality. The final design should represent the heartbeat of our community, that was informed by the community itself. The end goal is a place that residents are proud of, that offers opportunities for intergenerational enjoyment, and that supports the community fabric that makes this a great place to live.

To that end, the Clear Creek Metropolitan Recreation District (CCMRD) has spearheaded numerous community engagement efforts to inform the initiative. Deployment of online surveys, roundtable discussions, and engagement activities have garnered rich and informative feedback from the spectrum of voices that comprise our community. This report provides a summary of findings and the recommendations for consideration.



Clear Creek Metropolitan Recreation District

Summary/Overview of Engagement Activities and Outcomes

The Idaho Springs Skatepark Project

Efforts to organize around the establishment of a skatepark in Idaho Springs began in earnest on September 7, 2021, with the initial meeting of the Skate Board (a committee of local skaters and supporters of the 20+ year old vision to bring a world class skatepark to Clear Creek County). This initial meeting was coordinated in collaboration between CCMRD and Mountain Youth Network (MYN).

In 2019, MYN surveyed Clear Creek students on youth friendly spaces in the county. A skatepark was ranked as the number one best way to improve youth friendly spaces in Clear Creek County.

Since that time, the Skate Board has addressed the School District Board of Education (September 28, 2021) and the City of Idaho Springs City Council (June 13, 2022) to voice the myriad of reasons why a skatepark is important – not only to the people who live here, but to the local economy and the surrounding region in general.



"Skate Board" Members at City Hall for City Council Presentation

In addition to these presentations, the Skate Board organized four (4) "pop up skatepark" events in Idaho Springs:

1. Halloween Rail Jam [October 29, 2021]

Using some of the features from the former skatepark that was demolished in August 2021, the Skate Board executed the first of many "pop up skatepark" events to raise awareness around the efforts to replace the former skatepark.



Clear Creek Metropolitan Recreation District



Skaters Queued for Trick Contest



County Commissioner & Chief of Police Showing Support

Quantitative Data:

Approximate Number of Participants: 50

Approximate Number of Spectators: 200

Demographics: Participants ranged from very young (3 years old) to adults of all ages, the majority of whom were from our local community.

2. **Go Skate Day [June 21, 2022]**

To capitalize on the nationwide “Go Skate Day” annual event, CCMRD and MYN coordinated a street takeover and rail jam competition as a means for engaging with the community about the Skate Board’s efforts to bring a skatepark to Idaho Springs.

The intended outcomes of the event were as follows:

1. Help to make skateboarding more accessible in Clear Creek County/Idaho Springs.
2. Encourage young people to get outside and enjoy the sport.
3. Continue to raise awareness, interest, and excitement about the proposed Idaho Springs Skatepark.





Clear Creek Metropolitan Recreation District

Children + Adults / Skateboarders + Roller Skaters in Queue to "Hit" Ramp

Contest Participant



Scooters Welcome!



Rollerskaters Welcome!



Spine Ramp from Former Skatepark



Participants Enjoying Variety of Features



Evidence of a Well-Attended Event

Quantitative Data:

Approximate Number of Participants: 100

Approximate Number of Spectators: 250

Demographics: Local community members, plus town visitors. Ages ranged from 3 years old to adults of all ages.

3. Can'd Aid Skateboard Giveaway [July 19, 2022]

Thanks to the generosity of Can'd Aid, a nonprofit organization with the mission to support thriving communities, a "pop up skatepark" event was organized around their donation of 50 skateboards. In collaboration with Gilpin County Parks & Recreation, the skateboarding demonstration and donation drew local children from the targeted demographic of 4th and 5th grades.



Clear Creek Metropolitan Recreation District

Can'd Aid SKATEBOARD GIVEAWAY
4TH & 5TH GRADE STUDENTS
WHILE SUPPLIES LAST

JULY 19TH | 2-5 PM
 CREEK SKATE BLACKTOP
 IDAHO SPRINGS, CO

COME ON OVER! 4TH & 5TH GRADE STUDENTS CAN COME AT 2PM FOR A FREE SKATEBOARD, DEMO, AND A COUPLE TIPS AND TRICKS FROM THE PROS!

WHY SKATEBOARDS?
 A SKATEBOARD PROVIDES YOUTH WITH A HEALTHY OUTLET AND IS A GREAT TOOL TO GET KIDS SPENDING MORE TIME OUTSIDE AND LESS TIME IN FRONT OF SCREENS.

CHILDREN AVERAGE 7 HRS. OF SCREEN TIME PER DAY
 1 IN 5 CHILDREN ACHIEVE 60 MINUTES OF PHYSICAL PLAY EACH DAY

SQUARE STATE SKATE
 CLEAR CREEK METROPOLITAN RECREATION DISTRICT



Promotional Flyer

A Happy Recipient of a Free Skateboard



50 Skateboards for Our Community!



Can'd Aid Presentation + Participants



Thank You, Can'd Aid!

Quantitative Data:

Approximate Number of Participants:30



Clear Creek Metropolitan Recreation District

Approximate Number of Spectators: 15

Demographics: Mostly fourth and fifth grade students and their caregivers.

4. Little Bear Pop-Up Skatepark Event [September 11, 2022]

This smaller and more casual “pop up skatepark” event was created to bring the skateboarding community and the skatepark enthusiasts together once more before the onset of winter. This was a less structured event that included giveaways from Vans (shoe manufacturing company).



Promotional Flyer



Pop-Up Skatepark Set-Up



Pop-Up Skatepark Set-Up



Clear Creek Metropolitan Recreation District



Prize Distribution



Prize Distribution

Quantitative Data:

Approximate Number of Participants: 30

Approximate Number of Spectators: 20

Demographics: Mostly youth and their caregivers, along with tourists, and adults of all ages.

In addition to the “pop up skatepark” events, a variety of meetings, guest speakers, and surveys were deployed to further capture interest and feedback regarding a skatepark in Idaho Springs. Please see the summary of findings described below.

Change.Org Petition

In September 2021, a community member/business owner/avid skateboarder established a change.org petition to raise awareness around the need for a skatepark. Since that time, 1,179 people have signed as indication of their support and agreement with the need.

GoFundMe

Established on October 28, 2021, a GoFundMe crowd-sourced fundraiser was created to help spread awareness and to begin collecting donations for the proposed skatepark. To date (April 2023), \$1,072 has been raised.

Skatepark Need Survey

In January 2022, CCMRD launched a brief (4 question) online survey in collaboration with Mountain Youth Network (MYN) to gather community feedback on the concept of a skatepark in Idaho Springs. Please see the summary of findings below and Addendum #1 for the full report.

- **Question 1:** “What about a skatepark in Idaho Springs makes you most excited?”

Response Themes & Selected Quotes:

Accessibility (in both cost and location)



Clear Creek Metropolitan Recreation District

"Not having to drive to another county to use a skatepark. It's a great way to connect with my own child and stay connected with my inner child." - Community Member, Clear Creek Resident, Parent, Idaho Springs Business Owner, Rollerskater

Community Vibrancy

"It's a space where community can be built." - Community member, Clear Creek Resident, Parent

Designated Area (relocating skaters from sidewalks)

"That all the kids and adults will have somewhere to skate that is safe away from traffic" - Community Member, Clear Creek Resident, Parent, Idaho Springs Business Owner, Skateboarder

Provision of an Outdoor Activity for Kids and Teens

"A safe place for our kids to positively express themselves through skateboarding/bmx/scootering/etc, and bond & create friendships with one another at a safe area." - Community Member, Clear Creek Resident, Parent, Idaho Springs Business Owner, Skateboarder

Over 50% of respondents cited this as the aspect that makes them most excited.

Risk Reduction (diverting young people from risky behaviors)

"I think that it would be good for the youth in Idaho Springs to have something productive, and fun to do in their off time in Idaho Springs. If you think about it we have nothing for them, all we have are restaurants, and trouble for them to find. I think that the amount of juveniles in this town who wind up getting hooked on drugs or alcohol at an early age would decrease significantly if we brought back that skate park, which was supposed to come back after they fixed Riverside in the first place." - Community Member, Clear Creek Resident, Skateboarder

- **Question 2:** "What suggestions do you have or are there any details you recommend we consider for this project?"

Response Themes & Selected Quotes:

Accessibility (especially to children walking unattended)

"Close to town so it is walkable for kids to get to." - Community Member, Clear Creek Resident, Parent, School District Employee

Many respondents spoke to the importance of a safe route to the skatepark for children to travel.

Design (ensuring quality, durability, and ride-ability)

"Make sure professionals build it and it holds up to our extreme weather conditions in Clear Creek County." - Community Member, Clear Creek Resident, Skateboarder



Clear Creek Metropolitan Recreation District

"The design is key. If not designed well no one will come. It can't just be a few rails and ramps. Needs to have a flow track and other features that bring skaters to the park. Otherwise they will just go to Denver or Summit." - Community Member, Clear Creek Resident, Parent

Securing a professional and experienced skatepark designer and builder was strongly recommended by many respondents.

Inclusive (ADA accessibility and individuals with diverse ability levels)

"Various skill level features so folks can enjoy it that have different abilities. Make sure it is ADA accessible and folks in wheelchairs can get up into the skatepark." - School District Employee

Lighting (nighttime usage and safety)

It should have adequate lighting, it should possibly have restrooms and a water station, and it should be part of police officers' regular patrol route." - Community Member, Clear Creek Resident, Parent

"Please put lights in, so the town kids can utilize the park after dark. (Or after their shifts at school, their jobs, etc)" - Community Member, Clear Creek Resident

Multiple User Groups (suitability for bikes, scooters, roller skaters and people of all abilities)

"Please allow scooters and rollerblades. Lights so it can be used at night in the summers." - Community Member, Clear Creek Resident, Parent, School District Employee

"People of all ages would use the park so include an area for small kids and another area for more experienced skaters." - School District employee

Safety

"I hope a police patrol can keep an eye on the park after dark to maintain its safety for all ages." - Community Member, Clear Creek Resident

- **Question 3:** "What questions or concerns do you have regarding a skatepark in Idaho Springs?"

Response Themes & Selected Quotes:

Access

"How will safe accessible pedestrian access be provided?" - Community Member, Clear Creek Resident, Parent, Idaho Springs Business Owner, Rollerskater

"The location is a little out of the way and might be harder for some kids in town to get to. It'll need a nice wide and safe sidewalk to access it from town with crosswalks." - Community Member, Clear Creek Resident, Parent, Skateboarder

"Ensuring safety with crossing over I-70." - Community Member, Clear Creek Resident, Parent



Clear Creek Metropolitan Recreation District

Cost

"How much will it cost to build?" - Community Member, Clear Creek Resident, Parent

Parking

"Is there plenty of parking? Will there be places for onlookers to sit?" - Community Member, Clear Creek Resident, Parent

Safety

"That it will be a good safe place." - Community member, Clear Creek Resident, Parent

Note: 73 respondents (50%) indicated that they have no concerns about a proposed skatepark in Idaho Springs

- **Question 4:** "Any additional comments?"

Several respondents spoke to the need of having a professional skatepark design/build firm and to ultimately improve upon the design of the previous skatepark. In addition, many people spoke to the enthusiastic support they have for the initiative to bring a skatepark to Idaho Springs/Clear Creek County.

Noteworthy Responses:

"Skateboarding/bmx/rollerblade/scootering gives children such an artistic canvas to express themselves, while also pushing their limits; learning new skills; making new friends. This would be such a great outlet to do so." - Community Member, Clear Creek Resident, Parent, Idaho Springs Business Owner, Skateboarder

"I'm so psyched to see this project get going. I can't wait to use the park and my daughter is excited about the park. I'm delighted to see skateparks being included in public spaces and available for all to use. Loving to skate (skate board, roller skate, inline, ect) isn't a menace to society. Skating brings joy and passion." - Community Member, Clear Creek Resident, Parent, Idaho Springs Business Owner, Rollerskater

"If the skatepark was visible from i70 it would get more notoriety, potentially from people in the skateboard industry passing through on i70 too. It could be a gem of a skatepark since we live in such a beautiful area." - Community Member, Clear Creek Resident, Parent, Skateboarder

"Think the project is a great idea." - Community member (Clear Creek Resident)

"This is exciting news. I am hoping that with some of the robust plans for the city the planning and implementation of this will not be half hearted. We have a real chance to make something that people will travel here for." - Community Member, Clear Creek Resident, Parent, Skateboarder

"I would like to see an area with numerous activities, not just a skatepark." - Community Member, Clear Creek Resident.



Clear Creek Metropolitan Recreation District

"We are very hopeful this project will come to fruition and the community will help make this happen for Clear Creek Youth and others that enjoy this sport. We hear there isn't anywhere for young people to "hang out". This would be a safe area with adults coming and going." - Parent

"Thank you for all of your hard work on this and taking time to review comments and think about this effort from a County-wide perspective as if done well it could be a huge new recreational feature for the County and beyond. Good luck!!" - County Employee

Quantitative Data:

Number of Respondents: 144 People Responded to the Online Survey

Self-selected respondent types were as follows (*most respondents identified with multiple categories*):

- Community Member
- Clear Creek Resident
- Parent
- School District Employee
- Student
- Idaho Springs Business Owner
- Skateboarder
- County Employee

Skatepark Roundtable Meeting

On March 9, 2022, CCMRD hosted a Skatepark Roundtable meeting at Tommyknockers Brewery in Idaho Springs. Attendees enjoyed a presentation from Everett Tetz of Newline Skateparks, who spoke on the value of integrating skateboarding into education. Everett shared several examples of skateparks and the creative ways in which they can be incorporated into a variety of settings. Afterwards, attendees participated in an interactive "SWOT" analysis in which they shared their opinions of the strengths, weaknesses, opportunities, and threats of building a skatepark in Idaho Springs. Please see Addendum #2 for the full SWOT report.



Clear Creek Metropolitan Recreation District



Quantitative Data:

Approximate Number of Attendees: 27

Demographics: Range of students, parents, Clear Creek School District staff, City employees, and community members of all ages

High School Internship Program

Starting in January 2023 and in collaboration with Clear Creek School District and Mountain Youth Network, CCMRD has facilitated a high school internship program for students interested in supporting the effort to build a skatepark in Idaho Springs. Meeting on a weekly basis, the group of 5-12 high school students convene to discuss fundraising opportunities and ways to support the skateboarding community.

Thanks to their diligent efforts, the High School administrators are currently working through the approval process for the establishment of a mini skatepark on school grounds, using the features from the former skatepark. Students have been tasked with establishing rules and safety precautions, among other logistics. Once complete, the students will support the facilitation of a skateboarding unit in the physical education curriculum, along with making visits to each of the area elementary schools to teach skateboarding to our youngest learners. The interns are also working on plans for future popup skatepark events for the summer.



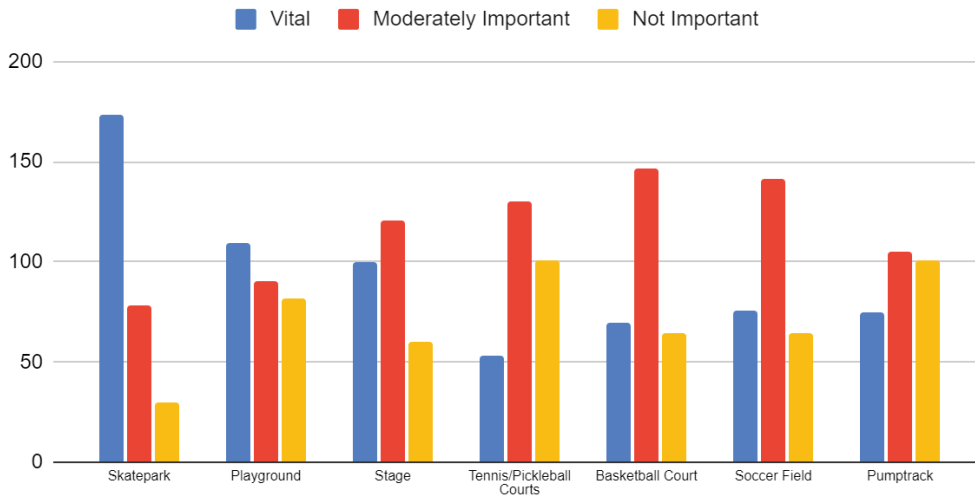
Clear Creek Metropolitan Recreation District

Ballfield Redesign Feedback Survey

In October 2022, CCMRD launched a 13 question online survey to gather community feedback on the preliminary drawings of the master plan redesign. Please see Addendum #3 for the full report.

A graphic of the proposed redesign along with a map of the space were provided. The first question invited respondents to rate the importance of including each amenity by selecting among “vital,” “moderately important,” and “not at all important.” The graph below summarizes the findings.

How important is it that each amenity be included in the proposed redesign of the space?



The amenities that received the most votes for being “vital” include:

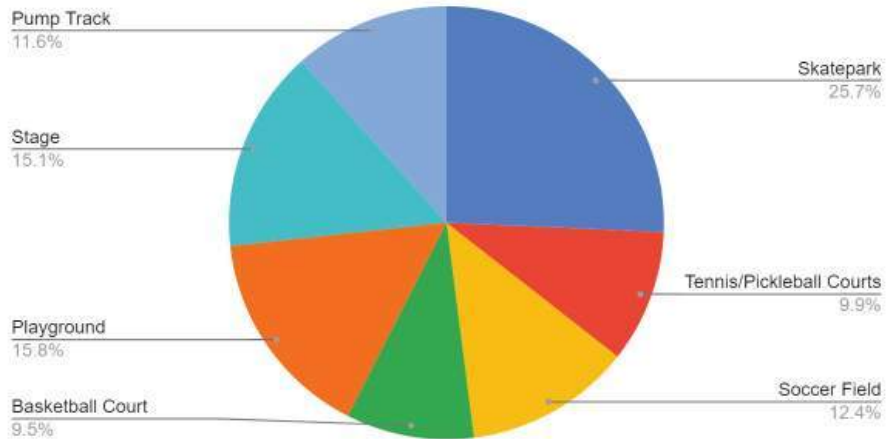
1. Skatepark
2. Playground
3. Stage

The second question asked respondents to vote for their top three favorite amenities to include. Please see the pie chart below for a summary of the findings.



Clear Creek Metropolitan Recreation District

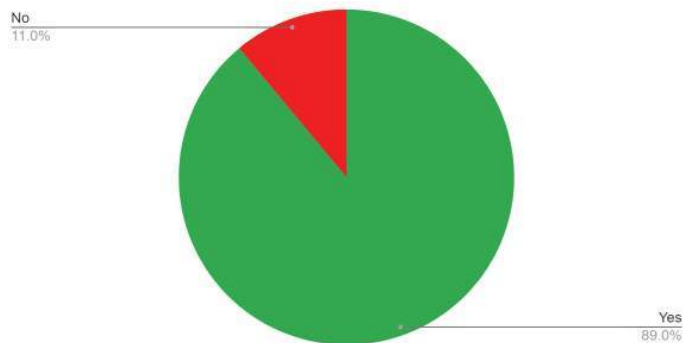
Please vote for your TOP 3 favorite amenities to include in the redesign



A skatepark (25.7%), playground (15.8%), and a stage (15.1%) were identified as the top three favorites among the 281 respondents.

When asked if they were in favor of redesigning the space to include the specified amenities, 89% of respondents indicated “yes.” Please see Addendum # for qualitative responses (why/why not).

Are you in favor of redesigning the space to include the listed amenities?



The final questions of this survey offered insight into the perceived (non-vehicular) accessibility of the ballfields, and if improvements to the Peaks-to-Plains Trail (aka the “Greenway”) would make a measurable impact to the perception of respondents.



Clear Creek Metropolitan Recreation District

When asked: “How accessible are the ballfields by foot, bike, or skateboard at present?” and using a 5-point scale (1 = not easily accessible, 5 = completely accessible), the average of the 281 responses was 3.

And in response to “How accessible do you think the ballfields will be by foot, bike, or skateboard after improving the bike path and Greenway?” using the same 5-point scale, the average of the 281 responses increased to 4.1. This implies that trail improvements could contribute to a greater level of comfortability walking to the ballfields.



Clear Creek Metropolitan Recreation District

Idaho Springs Sports & Events Complex Master Plan Open House

On December 7, 2022, CCMRD joined the City of Idaho Springs to host an open house to reveal the proposed master plan and field questions and public comment.

The event drew approximately 45 attendees from throughout Clear Creek County. Business owners, recreation enthusiasts (soccer players and skateboarders, primarily), parents, children, and community members in general came out to review the drawings and ask questions.

Some of the specific questions and concerns that were expressed are listed below:

- Regarding the stage:
 - Could the orientation of the stage be made to best support acoustics?
 - What about considerations for a green room space for performers?
 - What about relocating the stage to be behind home plate of Quinn Field (the field to the west)?
- Regarding the soccer field:
 - Could tall fences be installed to prevent well-kicked soccer balls from going over the fence and into the road?
 - With a large number of adult soccer players, there is a strong desire for a full sized soccer field.
- Regarding the plaza:
 - Would the vendor space be conducive to liquor licensing and associated permits?
 - Could vendors utilize both the field space and the central plaza?
 - Would vehicles have access to the backstage area while an event is in progress?
- Regarding the bathrooms:
 - Upgrading from porta potties is a priority expressed by many!
- Regarding the parking:
 - Designated parking spaces are a must!



Clear Creek Metropolitan Recreation District

Playground Dreamworking Activity

On February 24, 2023, CCMRD facilitated a Playground Dreamworking activity with local elementary school-aged children. A conversation was facilitated around favorite playground elements and the reasons to love playgrounds. Afterwards, the kiddos' imagination ran wild as they designed the playground of their dreams, using catalogs of playground elements. We tallied up the various elements that the children selected - climbing ropes and natural materials were the clear winners! We hope to integrate this feedback into the master plan redesign of the Idaho Springs Ballfields.



A Sampling of the Dream Playgrounds

Quantitative Data:

Approximate Number of Participants: 15

Approximate Number of Spectators: (4 staff)

Demographics: Community children ranging from ages 5 to 10



Clear Creek Metropolitan Recreation District

Special Event Stakeholder Engagement Meeting

On February 28, 2023, CCMRD hosted a special event community engagement roundtable at Tommyknockers Brewery with a variety of vendors, community partners, and community members. Due to proposed and ongoing developments throughout the City of Idaho Springs, it is expected that very shortly, the ballfields will be the only space in Idaho Springs (and Clear Creek as a whole) with the capacity for hosting large scale events. These events not only provide the community with a variety of cultural and athletic experiences, they also provide a revenue infusion for local businesses and organizations. In particular, many of these events have the potential for attracting a significant amount of visitors from outside Clear Creek County. (For the longstanding events that have been displaced by the loss of Digger Field, for example, it is critical that arrangements be made to allow for continued success and growth.)

During the roundtable, attendees expressed their enjoyment of the large-scale events that CCMRD hosts at the ballfields, such as the Pumpkin SMASH and Rapidgrass. However, many attendees vocalized the imperative need for more efficient parking and bathroom facilities. This is especially important as each event continues to grow year after year.

In addition to parking and bathroom facilities, local vendors expressed the desire for improved access to electricity and that design considerations be made to ease loading and unloading. The desire to host farmers markets at the ballfield at some point in the future was also discussed.

Following the roundtable discussion, attendees were invited to respond to five questions via post-it notes. Please see the summary of findings below.

1. What is something we don't currently do or have at the ballfield space that you would like to see in the future?
 - Farmers' Market
 - Concession Stand
 - Better Crowd Control
 - Dog Show/Westmuttser
 - Drama/Shakespeare at the Park
 - Dance Class
 - Roller Skating
 - Go Kart Track
 - Community Game Days
 - Shaded Picnic Area
2. What do you love about events?
 - Food
 - Community Gathering
 - Meeting New People



Clear Creek Metropolitan Recreation District

- Opportunities for Local Businesses to Grow
 - Live Music
 - The Energy
3. What is your favorite event venue and why?
- ABasin's Festival of the Brewpubs - Cozy space, beautiful setting, good music stage, perfect for a mid size beer festival.
 - Venues that maximize their earning potential for private events
 - Estes Park Fairgrounds - a variety of elements and features for people of all ages
 - Mishawaka - small and intimate
 - Salida River Park - perfect small/medium venue, outdoors, natural beauty, playground, stage, grass
 - Red Rocks - atmosphere, sit, stand, and dance all in one area
 - Street markets with tents and table areas
 - Argo Venue
 - Walnut Valley Festival - Field, many stages, camping, and good vibes.
 - Evergreen Lake House
 - El Rancho (Evergreen)
4. What are the biggest design related challenges to successful events at the ballfields?
- Parking
 - Vendor Power Supply
 - Crowd Control and Security
 - Water & Sewer
 - Proximity of I-70
 - Weather Mitigation
5. What are the biggest design related opportunities you see at the ballfields?
- A place for community gathering & large events, including farmers markets.
 - Mixed used space that is accessible for all people.
 - Areas for people to sit, shade, bathrooms, trash receptacles, and lights.
 - Connect the east and west end of town, including usage of shuttles.
 - Parking



Clear Creek Metropolitan Recreation District

Youth & Adult Soccer

CCMRD hosts a weekly drop-in adult soccer program that has maintained popularity throughout the years. Many of the players attended the various engagement events to voice their desire to continue playing and to have a full sized field with tall fences to help prevent stray balls.

Soccer is the most popular youth program offered by CCMRD. Despite a slight dip in participation numbers in 2020 and 2021 due to the COVID-19 pandemic, registrations in 2022 exceeded that from 2019, which saw the highest numbers on record. Youth soccer game days historically have utilized one large soccer field, one medium field, and two smaller soccer fields, to accommodate the large number of participants and teams that travel to Idaho Springs from Gilpin County, Grand County, and Nederland.



Clear Creek Metropolitan Recreation District

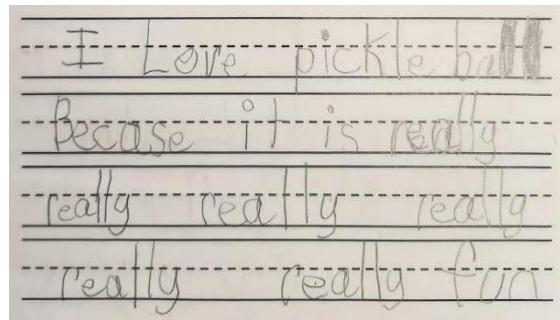
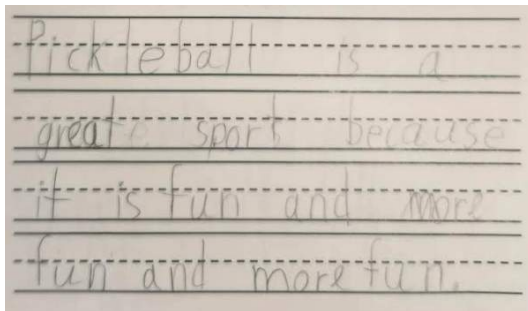
Pickleball for Adults

While pickleball popularity continues to explode nationwide, we are seeing staggering growth here in Clear Creek County as well. Starting in December 2022, we began offering introductory pickleball classes at CCMRD. Many of the players from the first classes have since progressed through learning the basics to participating in open-play sessions. We have continued to expand our pickleball offerings to include instructional clinics for a variety of skill levels, open play sessions for a variety of skill levels, and our recent Pickleball Scramble (a mini-tournament) sold out shortly after registration opened. Plans are now underway to host a series of summer tournaments starting in June. (The clinics and the open play sessions consistently sell out, with a waitlist.) The primary limiting factor to even greater growth is the lack of court space, as we can only accommodate one pickleball court in the gymnasium at the Clear Creek Recreation Center in Idaho Springs. (Most pickleball tournaments utilize 3-4 courts.) Despite constrained court space, we recently achieved the milestone of having more than 100 different people participate in at least one of the various pickleball offerings we have hosted. (This makes pickleball CCMRD's most popular adult program.)

Pickleball for Kids

On February 22, 2023, the first grade class from Carlson Elementary visited the Clear Creek Recreation Center in Idaho Springs for a special pickleball lesson. The instructor and a handful of parent volunteers led the children through a variety of activities to teach the fundamentals of pickleball.

Afterwards, the kids wrote about their experience and the takeaways they left with.





Clear Creek Metropolitan Recreation District

Ad Hoc Feedback

Social Media comments related to ballfield - The local community is often expressive about opportunities and challenges in the County via the many Facebook community groups. This project has seen a variety of feedback online, including expressions of excitement and support of the opportunities, as well as concern over space being “taken away” from other programs (specifically, soccer and baseball).



Clear Creek Metropolitan Recreation District

Community Engagement Report Conclusion & Recommendations

With limited space and a variety of stakeholders with diverse opinions and preferences, we feel it is of utmost importance that each element of the design be carefully considered. The most popular recreational activities among our community should be prioritized over those with less engagement. Not only that, but as the operator of the property, CCMRD is reliant on the revenue that is generated from the various uses of it. As such, CCMRD closely monitors the interests of the community and strives to support them while fostering continuous growth.

We put forth this report with our strong recommendation for the following:

- A world class skatepark of at least 12,000-15,000 square feet.
 - Further, in recognition of the significant amount of community support, involvement, interest, and engagement in the skatepark specifically, **the CCMRD Board of Directors urges the City to prioritize the skatepark by incorporating it into the first phase of the master plan project.**
- A multi sport game court that incorporates a tennis court, a basketball court, and 3-4 pickleball courts into a single space. Efficient design and striping will be critical to the multifunctionality of the hard surfaced area. The photo below provides an example of the possible combination of three sport courts into one.



Please note: this photo is offered as a visual representation of the preferred multifunctionality, despite being smaller than what is preferred. We recommend that the master plan redesign include at least 3-4 pickleball courts.

The CCMRD Board of Directors recommends this design approach, so as to provide additional space for green fields that can offer the multifunctionality that will best support and facilitate the other popular activities that are enjoyed by the community, including soccer.

- The CCMRD Board of Directors recommends that the master plan redesign include ample green space to support the same square footage of soccer fields that the current space accommodates. This specifically includes: one (1) large field at 200' x 108' (21,600 sq. ft.), one (1) medium field at 110' x 82.5' (9,075 sq. ft), and two (2) small fields at 75' x 45' (3,375 sq. ft. each).



Clear Creek Metropolitan Recreation District

- Enhanced walkability/safe route for children. In light of the location of the ballfields and the importance of easy access to it by community members of all ages, the CCMRD Board of Directors recommends that further improvements be made to the box culvert and bike path that connects to the ballfield area. Lighting along the path, curb/gutters, and physical barriers between pedestrians and vehicles on the portion of the path that travels along roadways will improve the safety and walkability of that route along with wayfinding/signage. Further, incorporation of an official stop on the Roundabout public transportation route at the ballfields will allow for greater accessibility, especially for community members traveling beyond walking distance.
- Regarding the pumptrack, the CCMRD Board of Directors feels as though it would be most beneficial to maximize the space allotted for the skatepark without encroaching on it with the pumptrack. We recognize that the community is interested in a pump track, and that a larger and more conducive location could be identified and developed in a future initiative.
- Lighting enhancements will contribute to the overall safety of the space. The CCMRD Board of Directors recommends the utilization of current lighting infrastructure and consideration of enhancements that are dark sky compliant. Softer walkway lighting and zoned schematics would be preferred and considered beneficial from a cost and efficiency perspective.
- The sometimes unpredictable weather conditions in Idaho Springs warrants further consideration into the incorporation of a shelter into the master plan redesign.

CCMRD - ADDENDUM 1



ADDENDUM #1: SKATEPARK NEEDS SURVEY RESPONSES

Timestamp	I am a: (Check all that apply)	What about a skatepark in Idaho Springs makes you most excited?	What suggestions do you have or are there any details you recommend we consider for this project?	What questions or concerns do you have regarding a skatepark at Building 103 in Idaho Springs?	Any additional comments:
1/11/2022 20:28:05	Community member (Clear Creek Resident), Parent	An area for kids to use	The more the better	Ensuring safety with crossing over 70	
1/11/2022 20:39:00	Community member (Clear Creek Resident), Parent	Finally something for the kids	Better location, more central to east and west residents and less traffic	Crazy traffic by the I 70 off ramps and 13th and Mirer Intersection	Skate park in town will be better used and please don't make it a major project like the one going here/there just that is placed.
1/11/2022 20:44:57	Community member (Clear Creek Resident)	Community Quality of Life	Add Bike Park	Coordination with the design of the new school which has not been transparent and vetted with the public	Needs to be transparent with public participation
1/11/2022 20:45:50	Community member (Clear Creek Resident), Student, Skateboarder	Being able to skate with friends after school and during the summer	Solid street section with plenty of different features	No questions or concerns	I would really appreciate a place to hangout with friends instead of getting in trouble skating in town
1/11/2022 20:53:35	Community member (Clear Creek Resident), Parent, Skateboarder	A skatepark in the county	A Skatepark in Georgetown and empire as well Team pain builds great parks	Not getting fished like many projects around the county (bighorn crossing mess)	
1/11/2022 20:57:17	Community member (Clear Creek Resident), Parent, Idaho Springs business owner, Skateboarder	A safe place for our kids to positively express themselves through skateboarding	Please put lights in, so the town kids can utilize the park after dark. (Or after their shifts at school, their jobs, etc.)	Will their be lights, for after dark skating? (Consider the kids at school & work all day). Who will be contracted to build the park?	Skateboarding/bmx/mofeebale/scootering gives children such an artistic canvas to express themselves, while also pushing their limits, learning new skills, making new friends. This would be such a great outlet to do so.
1/11/2022 20:57:28	Community member (Clear Creek Resident), Parent, Skateboarder	It will be a great recreational attraction for the youth of this county.	Make sure professionals build it and it holds up to our extreme weather conditions in Clear Creek County.	It needs to be built soon. This has been a long time coming.	
1/11/2022 21:15:14	Community member (Clear Creek Resident), Parent	That Clear Creek is recognizing the need for the more positive youth outlet!	Could you also (please, please please!!!) Consider a bike park too? Even just a small one would be so very much appreciated. The city land on the corner of Rose and Mt Zion in Georgetown would be a PERFECT spot for a little bike park! The amount of children in Georgetown and Clear Creek who would benefit from a bike park would be incredible.	None. I think it's awesome and a great step in the right direction.	Please also consider a bike park!!
1/11/2022 21:15:23	Community member (Clear Creek Resident), Parent	The kids, teens and all boarders deserve a place to play and practice their skills	You've got a Great Skate Board! I am eager to see everything! Perhaps set some rules up front it is harder to walk back and create them later.	No concerns. It's for the best	
1/11/2022 21:16:30	Community member (Clear Creek Resident), Student, Skateboarder	Social interaction despite years of setbacks. A growing youth group that will turn into an opportunity for our kids to be active & outdoors	Definitely think about doing a bowl with a rail coping	I asked questions at the top...	NA
1/11/2022 21:18:30	Community member (Clear Creek Resident), Parent	An opportunity for our kids to be active & outdoors	None	Ability to separate it from the playground?	How can you ensure issues that arrived at the old location do not occur at the new one?
1/11/2022 21:35:03	Community member (Clear Creek Resident), Skateboarder	It gives an area to skateboard	None	How much will it cost to build?	None
1/11/2022 21:40:11	Community member (Clear Creek Resident), Parent	A place where skateboarders and enthusiasts to gather together as well as give the kids get to spend outside more.	None	Nothing.	
1/11/2022 21:56:53	Parent, Idaho Springs business owner	I get to progress in doing what I love and it gets me off the video games.	Add a stair set to do tricks over.	Nope.	
1/11/2022 21:58:02	Community member (Clear Creek Resident), Student, Skateboarder	Youth activity opportunities.	Clear, thoughtful, enforceable rules posted before you open.	Cost to use? Who can use?	
1/11/2022 23:17:45	Community member (Clear Creek Resident)	Something positive for kids and adults	Safety foremost	That it will be a good safe place	
1/12/2022 5:38:21	School District employee	It will give most of my students something to do outside!	No lights - No skateboarding at night!!!	Where is it going to be put? on the old track? The bus barn is going there?	Where on the property is the skate park going to be built? As a police officer across the street from building 103, I feel there needs to be a police presence. Skate parks draw lots of unwanted types (ie drug dealers).
1/12/2022 6:31:31	Community member (Clear Creek Resident)	nothing	reasonable cost	cost	
1/12/2022 6:48:01	Community member (Clear Creek Resident), Parent, Skateboarder	A positive outlet for the kids	Please consider using Team Pain for design and build of the project. You can see beautiful examples of their work across Colorado. Just check out Golden Park at Ulysses. https://leampain.com/	Enforcement of keeping it clean.	This is exciting news. I am hoping that with some of the robust plans for the city the planning and implementation of this will not be half hearted. We have a real chance to make something that people will travel here for.
1/12/2022 6:56:19	Community member (Clear Creek Resident), Skateboarder	People need a place to skate where they won't be harassed or ran over.	A water fountain and bathrooms somewhere near the park might help with litter.	None.	
1/12/2022 7:07:32	Community member (Clear Creek Resident), Parent, Skateboarder	A safe place for the kids to skate	The park should be a combo of street and vert to cover all ages of skateboarders. The park should be concrete to handle all weather conditions in IS. Concrete makes maintaining the park cost effective because you are not constantly replacing wood bits that rot from UV and weather. I recommend getting quotes from Team Pain, who built a lot of the skateparks in Colorado. Groundline is also a reputable park builder who have built parks here in Colorado. Either builder is more than capable to run the project from start to finish.	No	
1/12/2022 7:33:37	School District employee	The place and opportunity for our area's young people to hang out and engage	No suggestions.	Will the renovations on Building 103 disrupt the usability of the skatepark - both during the updates and in the future if the building houses students?	
1/12/2022 7:45:42	Community member (Clear Creek Resident), Parent, School District employee	Getting kids outside	Will the skatepark have the potential to host competitions?	Not that I can think of.	
1/12/2022 7:52:28	Community member (Clear Creek Resident), Idaho Springs business owner	It raises the profile of the community and sends a progressive message	Parking? Traffic?	What's the smellin'? How can I keep informed?	What are the arguments against a skateboard park?
1/12/2022 8:12:06	Community member (Clear Creek Resident), Student, Skateboarder	It being local	A bowl	I think it's a great idea	NA
1/12/2022 8:14:26	Student, Skateboarder	I will be able to go to a local skatepark with my friends instead of having to go to	Definitely need ramps and little humps at the skatepark	N/A	Nope
1/12/2022 8:20:26	Community member (Clear Creek Resident)	Safe, fun, active space for youth. Awesome recreation for our community.	I know the youth are leading, and they've got this covered	It's a great location. Extend the pedestrian trail to the skate park so youth can get there without having to use the overpass. Consider a pedestrian crossing with the flashy lights when you push the button to cross 103 on the pedestrian trail.	This is awesome! Keep up the great work
1/12/2022 8:21:16	School District employee	A great opportunity for our kids to have something to do!	Will the skatepark have the potential to host competitions?	Not that I can think of.	
1/12/2022 8:22:13	Community member (Clear Creek Resident), Parent	That you will have a place to practice jumping a bike	Make sure this doesn't turn into a place where kids don't hang out to get into trouble. Good lighting hours that are kept so people don't go there at all hours of the night. Should be locked and no access when after hours.	I think this is a pretty good location, but again it needs to be a place where kids don't go to get into trouble.	
1/12/2022 8:24:20	Student	Having one	Actual ramps this time	No	Yes
1/12/2022 8:25:16	Community member (Clear Creek Resident), Student, Skateboarder	something to do in town and making friends	a bowl would be cool and somewhere not so far	right off Highway exits and entrances kinda far	no
1/12/2022 8:30:07	I work at CCH/MS	Getting kids outside	None	none	I think this is an exciting opportunity for the kids in our county!!
1/12/2022 8:34:54	Student	The area and space for the kids to hang out outdoors	no other then follow through	none	
1/12/2022 8:36:37	School District employee	It gives students another outdoor activity to pursue in town.	Can it be enclosed with a fence to prevent animals from getting inside?	Will it be accessible even when there are high radon levels?	
1/12/2022 8:40:25	Community member (Clear Creek Resident)	Waste of taxpayers money, and will not bring in families to contribute to the town	Cancel if Without supervision and medical staff on site you're looking for a lawsuit.	Ask the school superintendent, she seems to have all the answers, duh!!!	
1/12/2022 8:45:00	Community member (Clear Creek Resident), Student, Skateboarder, Sibling of skateboarders(My	The idea of a safe, fun place for me and my siblings to go skateboarding	I mostly just want some fat areas for learners(and the absence of random deep holes).	I don't really have any.	
1/12/2022 8:43:32	Student, Skateboarder	safe place to skate	lighting around the park	none	nah
1/12/2022 8:46:15	Student, Skateboarder	being able to learn more tricks over in the park	none	dont have any	no
1/12/2022 8:55:56	Parent	Safe central place for youth to pursue their passion and positively influences	Advertise as much as possible to garner help from the community if additional funding or help is needed.	No concerns	We are very hopeful this project will come to fruition and the community will help make this happen for Clear Creek Youth and others that enjoy the sport. We hear there isn't anywhere for youth age persons to "hang out". This would be a safe area with adults coming and going. Support from Law Enforcement is key.
1/12/2022 8:51:20	Community member (Clear Creek Resident)	Giving kids something to do in this county!	Easy location for all to access	Making sure the kids are safe, making right choices, and supervision.	
1/12/2022 8:55:33	Student	Having a fun place in town to skate and hang out with friends	No	None	make it happen
1/12/2022 8:58:02	Student, Skateboarder	that it would exist	actually maintain it	is it actually gonna be built	
1/12/2022 9:12:58	School District employee	It will give young people something constructive to do. The old skate park which was used to be a place for teens to hang out at.	You may wish to consider a way to close it at night or provide some sort of cameras or security system just to make sure that there are no problems when it's more difficult to monitor.	How to make sure that there isn't vandalism at either the skate park or the school when there's no one there monitoring the area.	
1/12/2022 9:52:30	Community member (Clear Creek Resident), Student	A place for teens to hang out at.	Also have little sitting places for teens that just want to sit around	Some kids might not exactly be able to access it as easily as kids in town.	
1/12/2022 10:05:18	Community member (Clear Creek Resident), Student, Skateboarder	It's somewhere safe the kids can go. The last skatepark was a safety hazard	N/A	N/A	
1/12/2022 10:12:19	Student, Skateboarder	That we don't have to drive down to Denver to go to a skatepark	Lights so we can skate after dark and a drainage system so it doesn't get flooded	No question	No
1/12/2022 10:19:58	Community member (Clear Creek Resident)	Add recreation, especially for young people.	Have young people help to design the park.	none	no
1/12/2022 10:41:57	Community member (Clear Creek Resident)	Something for kids to do	No	Safety Security	
1/12/2022 11:07:43	Community member (Clear Creek Resident), Parent, Idaho Springs business owner, Rollenstaker	Not having to drive to another county to use a skatepark. It's a great way to	Make sure to have features for all abilities and maybe a designated rink type space/area	How will safe accessible pedestrian access be provided	The city made a mistake by building the horseshoe pit and not investing in the skate board park.
1/12/2022 11:18:56	Community member (Clear Creek Resident), city employee	I think it's important for the community to feel as if someone is listening to their	Don't half do it. Make it the best in the mountain area.	While I think the location is ideal in that it doesn't take up valuable in town property I hope there will be camera and police drive by oversight.	
1/12/2022 11:21:52	Community member (Clear Creek Resident)	encouraging people to skate more	no	no	
1/12/2022 11:28:28	School District employee	Having one will give interested individuals a place to go.	It should have adequate lighting, it should possibly have restrooms and a water station, and it should be part of police officers' regular patrol route.	Concerns: security and safety	
1/12/2022 11:31:53	Community member (Clear Creek Resident), Parent, School District employee, Skateboarder	Providing kids with a fun and safe place to practice skateboarding, giving out	Use concrete/cement to eliminate the need for much upkeep. Include smaller scale boxes, ramps and rails for beginners. Contact the Tony Hawk foundation to see if Idaho Springs could qualify for a free skatepark.	None. I think a skatepark will add so much to our town. The old skatepark was pretty terrible.	
1/12/2022 13:29:29	School District employee	Great place for teens to hang out, provides outdoor activities for kids	Just consider material when constructing this park to make it durable and resistant to vandalism.	Needs to be regularly maintained to keep it safe for use and free of negative influences	
1/12/2022 13:33:39	Community member (Clear Creek Resident), Parent, Skateboarder	Just to have a place for local kids to skate!	Just making sure it's in a good location, and kids have protective gear! Required!	Not sure where 103 is?	Just would be a great thing for kids in Idaho Springs area!
1/12/2022 13:41:09	Community member (Clear Creek Resident), Parent	A place for our young people.	As big as possible. That thing at the east end was a start, but barely adequate.	It will be too small.	Please, get a skatepark. Use other communities successes for examples.
1/12/2022 15:15:13	Community member (Clear Creek Resident), Parent	Nothing at present	Consider why this is a priority after the last skate park was ripped up ??	Open to the public or restricted to residents ??	There was already a skate park on the east side of town, which was demolished this past summer. Why is this one any different ??
1/12/2022 15:27:04	Community member (Clear Creek Resident)	Kids will now have somewhere to spend their time during covid rather than getting	Lights so you can skate at night. Possibly a pavilion of some sort if the skate park isn't too	None	Allow all aspects of riding ie. Skateboard, bmx, scooter, rollerblades, etc
1/12/2022 15:58:56	Community member (Clear Creek Resident)	Its a positive use of or tax dollars.	Allow for and monitor food & beverage trucks there to sell hot hot kids.	Security and clean up	

IDAHO SPRINGS SPORTS & EVENTS COMPLEX MASTER PLAN

Timestamp	I am a: (Check all that apply)	What about a skatepark in Idaho Springs makes you most excited?	What suggestions do you have or are there any details you recommend we consider for this project?	What questions or concerns do you have regarding a skatepark at Building 103 in Idaho Springs?	Any additional comments:
1/12/2022 18:06:29	Community member (Clear Creek Resident)	It will be great for the youth in the community	Build lights for the skatepark	None	
1/12/2022 18:47:09	Community member (Clear Creek Resident), Parent	More outdoor constructive activities for young adults/children	Have lighting for night/winter use & keep it free	Potential for mis-use among individuals with "not so great intentions"	
1/12/2022 21:12:14	Community member (Clear Creek Resident), School District employee	Place for kids to get together.	Put up cameras to deter law breaking	Nah. Go for it	
1/12/2022 21:53:53	Community member (Clear Creek Resident), Parent, Skateboarder	Having a place to safely skateboard, hang out and learn something new for son	Concrete skatepark with a gazebo type covered shelter, water fountain/bathroom.	The location is a little out of the way and might be harder for some kids in town to get to. We need a nice wide and safe sidewalk to access it from town with crosswalks.	If the skatepark was visible from I70 it would get more notoriety, potentially from people in the skateboard industry passing through on I70 too. It could be a gem of a skatepark since we live in a such a beautiful area.
1/12/2022 22:12:50	Community member (Clear Creek Resident), Parent, Idaho Springs business owner, Skateboarder	Having a quality new park for my kids and me	Hire a professional design team. The last park in IS was poorly designed	Closed during school hours?	Please have a quality mini ramp half pipe
1/13/2022 10:07:13	Community member (Clear Creek Resident), Parent	hopeful for more positive/safe spaces for children's activities	bathrooms, safety 24/7 (lights/cameras/on-site manager), coaching/mentor programs	include separate spaces for beginner/ intermediate/ advanced levels and play space adjacent such as children's park, climbing rocks (similar to Frisco skate park), etc and covered tables for breaks	
1/13/2022 10:24:25	Community member (Clear Creek Resident)	Gives the kids something to do.	Whoever designs it should have experience.	Vandalism	
1/13/2022 12:25:30	Community member (Clear Creek Resident), Parent	It gives a fun and healthy outlet which would be great for the town	Follow success stories of other small towns that have pulled this off. Salida, BV, winter Park...	None. I think this is a great idea!	Super excited about this community initiative!
1/13/2022 17:40:46	School District employee	Having a designed place for people to enjoy skating/biking with varying difficulty	Clean for the school use during school hours.	Liability and it being closed off during school hours.	Can skaters help with 5th day activities?
1/13/2022 17:46:46	Community member (Clear Creek Resident), Parent	Kids would be excited with something to do	Well not if at night, protection from any drug zones (hiding places)	What happens when the school moves up 103?	
1/13/2022 18:09:31	Community member (Clear Creek Resident), Skateboarder	The fact that it's in Idaho Springs!!	Please put as much transition as flatground/street obstacles. It's nice to have variety at your skatepark, you want to utilize your space effectively, so making the obstacles be able to be used from different angles is important to provide variety of terrain to learn and play on. a good example of this would be Breckenridge Skatepark. A bowl with lots of variety is always a lot of fun and provides a uniqueness to any skatepark as they can be shaped differently to your desire/funds available. Something to remember is, the park doesn't need to be big to be fun. I mean you don't need a 120k park. It would rarely get used for how much concrete it takes to pour. 2-6 foot quarter pipes are ideal for all ages and levels.	I just hope the layout allows for multiple skaters to be able to enjoy the park at once.	Glad your doing this and glad to be of any help possible. I can weld, and have made many skate obstacles in my lifetime. Please feel free to contact me anytime at 815-457-7550 to answer any questions or feedback. I personally love helping build the skate community in a position direction and have had my hands in many projects across the United States. I also can get you in contact with reps from skateite if you plan on using the material instead of concrete. Thanks again. Sincerely, Aaron Will.
1/13/2022 20:18:31	Community member (Clear Creek Resident)	I love to see young people outside practicing something. Not inside playing video	Provide trash cans	None	Thank you for making this happen!
1/14/2022 8:00:29	Parent	My kids want one	Keep it open and clean, reduce the potential shady activities	none, don't know enough	
1/14/2022 9:09:09	County Employee	A place for recreation, residents and guests to enjoy - the one at the APEX is well enough could be a new 'draw' to the town.	I think it would be good to talk to the Aravida Apex and ask them for insight as the one in the County could be 'connected' to the Idaho Springs location and assist in bringing families to the town for the day to check out the skate park, eat a bite of lunch, and visit the shops - if done well it could be a new 'draw' to the town.	I am not sure that is the 'right location' I think it would be best to look at the ball field and turn one side into the skate park - not sure that using Bldg 103 would be best use unless it is an indoor skate park like the one at Colorado Mills Mall --- and if so, then again suggest talking with them and doing a bit more field research to see how it can be an economic driver if it is indoors and requires significant more overhead to operate.	Love the idea of having a skate park - but think a business plan or development plan needs to accompany it, just the idea is not strong enough to make such a large investment.
1/14/2022 11:03:56	Idaho Springs business owner, Skateboarder, BMX Biker	Awesome place to hang out! Not having to drive somewhere else to ride would	PLEASE consider vert options for bmx bikers and skaters who want bigger features. Smaller street features are cool, but have a relatively small market for people who ride and aren't just there for rails.	Also- There could be an opportunity for the 'Car Quest' on Colorado Blvd to partner with the new project as they have a whole section of the store dedicated to skateboards, new decks, trucks, wheels, parts, wax, etc --- things always break at a skatepark - so it may be something they would be interested in to expand that retail towards - so that a kid could easily fix their skateboard without having to figure out how to get to the other end of town, even assuming they know who sells skateboard parts in Idaho Springs.)	Thank you for all of your hard work on this and taking time to review comments and think about this effort from a County-wide perspective as if done well it could be a huge new recreational feature for the County and beyond. Good luck!!
1/14/2022 11:07:23	Community member (Clear Creek Resident), Parent	keep kids occupied and out of trouble	No smoking allowed no matter if its legal or not it should not be around minors	none just maybe make helmets mandatory	thank you for trying to do it
1/14/2022 11:50:48	Community member (Clear Creek Resident), Skateboarder	Outlet for the kids	Get someone who skates to build it. Last skatepark was hard to ride and had a weird flow	How big is it, what features will be added	Get skaters involved in the design and kids will actually use it
1/14/2022 11:52:56	Community member (Clear Creek Resident), Skateboarder	It's closer to my home, won't have to drive 45 minutes to skate.	A progressive half pipe would be cool.	When will it be done?	

CCMRD- ADDENDUM 2



ADDENDUM #2: SKATEPARK SWOT REPORT



Clear Creek County Skatepark in Idaho Springs

SWOT

- Strengths - Weaknesses - Opportunities - Threats -

*As informed by the Clear Creek County community at the
March 2022 Roundtable Meeting hosted at Tommyknockers Brewery*



Strengths

What separates the skatepark from something else?
What current factors contribute to success/added value?
What are the advantages of the skatepark?

- Easy location to access
- Providing for an activity for teens/kids that they love
- "My son will have a place to go and hang out with friends"
- Going outside + staying out of trouble
- Safe, fun, active space for youth
- Awesome recreation in our community
- Gorgeous location - using the beauty of Idaho Springs and the mountains and incorporating it into the design
- Better location - more central with less traffic
- Finally getting a sick park in Idaho Springs!
- Opportunities for kids to meet new people and build connections
- I won't have to drive to Golden or Silverthorne to skateboard
- Gorgeous location that will not get baked in the summer to the point of egg frying
- Clear Creek is recognizing the need for more positive youth outlets
- Stakeholder engagement in the process
- "Somewhere for my girls to learn to be confident and spend time with their dad"
- Many user groups
- Free activity for youth
- Super cool gym class opportunity for the school district
- Opportunity for being active and interacting with others
- Positive environment for kids (not Kum & Go)
- Young people helping with the design
- Liability and it being closed during school hours
- Collaboration
- Skatepark taking 2nd place to the school renovations
- It would improve the image of our community (being more progressive)



Strengths (Page 2)

- CCMRD programming
- Being next to the school makes sense
- Having a playground and a skatepark at the same location will appeal to more families
- Knowing my children can skate safely in a designated area (not on sidewalks)
- This fulfills the promise of the school's ballot initiative to provide the space to build the park
- A great way to connect with my own child and stay connected to my inner child
- Learning new things
- Not having to drive to another county to use the skatepark
- All the kids and adults will have a place to skate that is safe and away from traffic
- Showcases progressiveness and care for youth
- The community and the team bringing this project forward
- The kids definitely need some kind of outdoor activity in the mountains. This is a great idea
- A community space that appeals to teens
- Gives skateboarders somewhere to go besides the busy streets
- Equity for kids!
- Engaging student voices
- Could host events like national/state skateboard competitions
- Clear Creek County residents can finally participate in Go Skate Day
- Will be a nationwide destination for traveling skateboarders from all over the country
- School District ballot initiative



Weaknesses

What characteristics exist that put the skatepark at a disadvantage, relative to other projects?

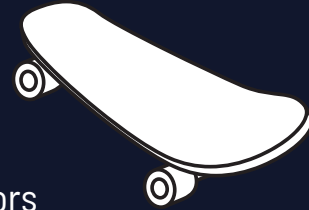
- Too many people
- Cost
- Location (less accessible as something in town)
- Ensuring safety with crossing over I-70
- Funding
- Sustainability
- Next to/near an elementary school is not the best place for a skatepark
- Worried if this will become a drug spot or a place where fights would be common
- Impact on neighbors
- The location is a little out of the way and it might be harder for some kids in town to get to. It'll need a nice wide and safe sidewalk to access it from town with crosswalks.
- I'm concerned that the location suggested is too isolated and will lead to problems
- 9 months of snow. ... is there a way to put heating elements into cement to help melting/drying? Solar power?
- Can we have lights to use at night?
- Enough space at Building 103
- Who would monitor it? I'm worried about graffiti, drug use, and transients making it their home



Opportunities

What elements in the environment could be leveraged to the advantage of the skatepark?

- Biking
- Project skate tech
- Integrated recreation design multiple courts
- Cool to combine with other recreation opportunities
- Additional recreational resource for residents and visitors
- Sitting area for spectators and/or special events and performances
- An area with numerous activities, not just a skatepark
- Work with community garden for flower and plant upkeep and planting bee friendly/hummingbird plants
- COMPASS DAY (5th Day) potential is huge!
- Can the natural topography be incorporated into the design?
- King Murphy and Carlson Elementary schools are adopting an experiential learning model. I'm excited for the curriculum connections.
- Host events like shows and competition to showcase the space as something the community is proud of
- Integrate school skate programs + More extra curricular activities
- Potential to incorporate ADA accessibility to serve those in our community and beyond (including Easter Seals RMV) to use the skatepark
- Gardening collaboration with Scraps-to-Soil
- Using innovative design to solve competing stakeholder challenges
- The hillside? Connections to the Greenway?
- May create more business for the small offering of skate supplies at Clear Creek Supply. May also open the door for a full skate shop
- Community outreach
- Off-season snowboard training, developing athletes in general
- Can we do something to get kids who can't afford them equipment?
- Art, maybe a mural?



Threats

What elements in the environment could cause problems or challenges for the skatepark?

- Wildlife
- Renovations @ Bld 103 disrupting the usability of the skatepark (both during the updates and in the future if the building houses students)
- Security & Safety
- Funding
- Parking
- Safety to cross I-70 from the main part of Idaho Springs. Pedestrian bridge is important
- NIMBY's
- Need to address concerns of elementary parents - lots of ways to do this!
- Interactions between skaters and wildlife (moose, bear, elk, mtn lions have been known to appear out of the woods)
- Supervision during school hours
- Potential for misuse from people will not so great intentions
- Freeze/thaw



CCMRD- ADDENDUM 3



ADDENDUM #3: BALLFIELD REDESIGN FEEDBACK SURVEY RESPONSES

CLEAR CREEK COURANT

PICKLEBALL ARTICLE - JULY 6, 2016



Popular pickleball comes to Clear Creek

Rec center offers drop-in games, clinics

Wednesday, July 6, 2016 at 10:43 am

County residents looking to expand their recreational horizons are invited to attend the new pickleball program at the rec center.



Chancey Bush
June Paulding hits a return during a game of pickleball at the Sampler Mill Recreation Center in Idaho Springs.

Those interested in the game, which combines elements of tennis, badminton and ping pong and was named after a dog called Pickles, are welcome to join Amy Tomlinson every Wednesday at 1 p.m.

Tomlinson hopes to build local interest in the game and plans to offer a series of pickleball clinics this summer at the rec center. The drop-in games are open to anyone, and equipment is available at no charge. There will also be a "pickleball ambassador" on hand most days to offer guidance to anyone new to the game.

Tomlinson said that after years of playing golf, she was looking for something new. She learned the game last November from her 78-year-old mother and has played it every day since.

"I was looking for something to do other than golf. After 30 years, I was kind of ready for a change," Tomlinson said, "and it just became a great way to meet new people."

She said the game, which uses paddles and a plastic ball, is also ideal for people with bad knees, hips or shoulders who nevertheless want to get some significant exercise.

"You get a very good workout. It's a very fast game because it is played mostly at the net," Tomlinson said. "So you get a really good workout in an hour, and you move on with your day."

Robert Smith and his wife, Mary, recently started playing with Tomlinson at the rec center. Smith said they also have a net that they set up in Georgetown for a few games during the week.

"It is just an extremely fun game to play," Smith said, then joked: "I want to get good enough at it that my wife doesn't beat me five games out of five when we play."

The fast-growing sport has the quick pace of tennis but is easier on the body because of the smaller court and the use of the wiffle ball.

Smith added that when he plays in Georgetown, he lets his dog chase the ball between volleys. Pickles the dog would be proud.

How to participate

The Clear Creek recreation center in Idaho Springs is offering a series of "skills and drills" pickleball clinics for anyone 16 or older on:

- July 6 at 6 p.m.
- July 9 at 9 a.m.
- July 13 at 9 a.m.
- July 20 at 6 p.m.

General recreation center admission fees apply, but there is no charge for the clinics. Equipment is available at no charge. Sign up by calling 303-567-4822.